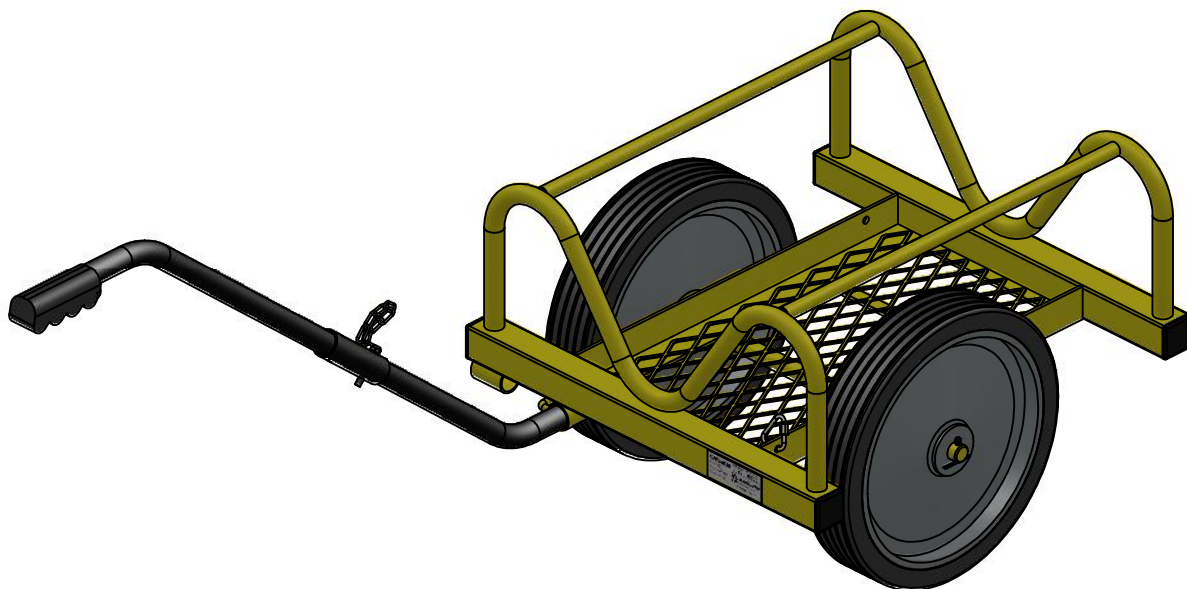




RS 200 PIPE TROLLEY

INSTRUCTION MANUAL AND TECHNICAL DOCUMENTATION

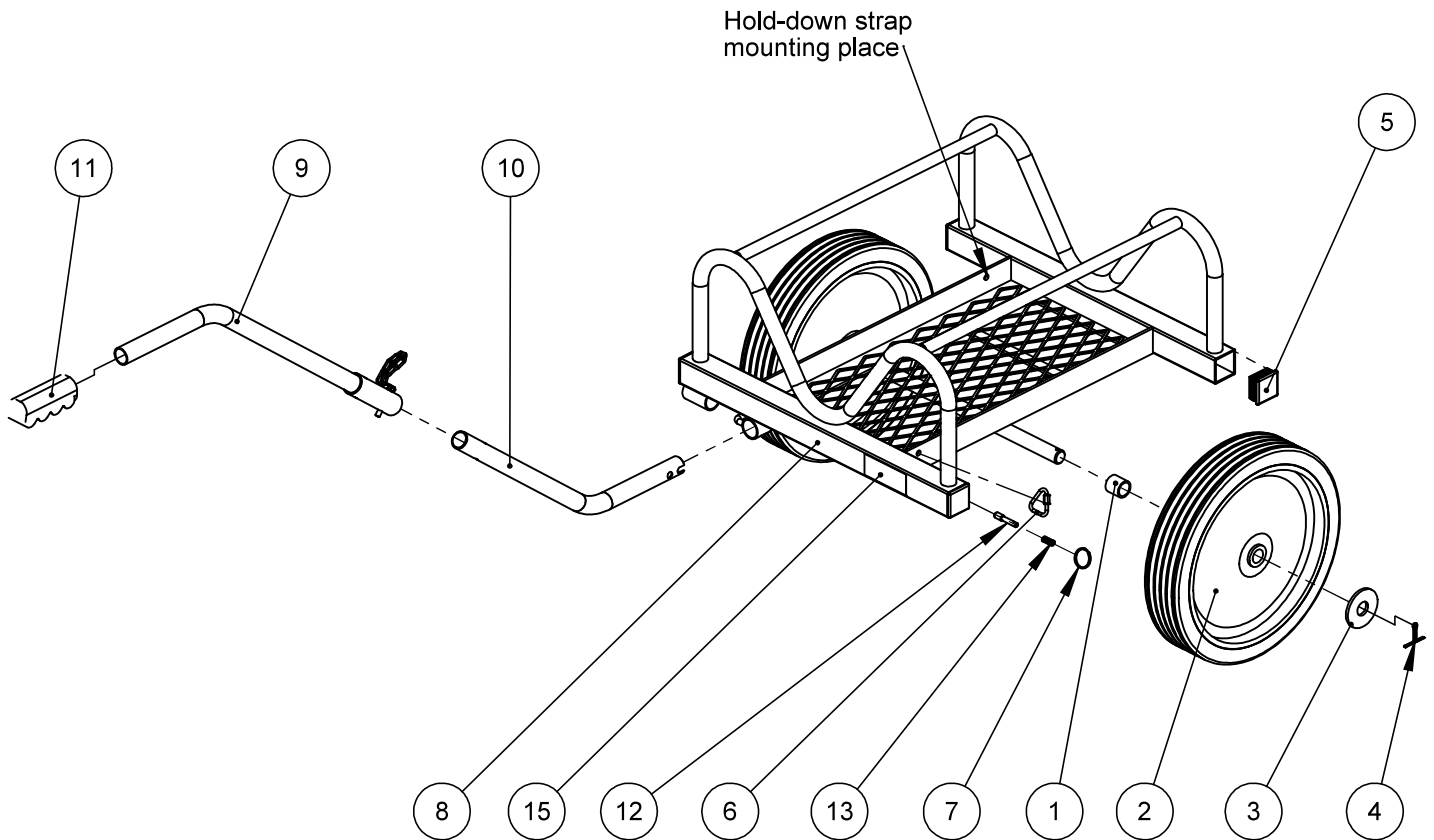


edition: 1/09.11.2012 en

Tacklestore Ltd, Unit 23 Atlantic Road,
Avonbridge Trading Estate, Avonmouth, Bristol, BS11 9QD, England
tel. 0044 1179 381 600, fax 0044 1179 381 602
www.safety-lifting.com



LIST OF COMPONENTS



Hold-down strap not shown (item 14)

15	RS200 "Serial number" - Label	1	PVC film	RS200-980	0.00	
14	Hold-down Strap	1	galvanized steel	RS200-300		
13	Spring	1	galvanized steel	AT011-105		
12	Plunger	1	galvanized steel	AT011-104		
11	Handle Grip	1	Rubber	RS200-204	0.08	
10	Handle - lower part	1	galvanized steel	RS200-203	1.03	
9	Handle upper part	1	galvanized steel	RS200-200	1.47	
8	Frame	1	galvanized steel	RS200-100	19.03	
7	Split Ring $\varnothing 35 \times 2$	1	galvanized steel	RS200-007	0.01	
6	$\varnothing 8$ mm triangle screw link	1	galvanized steel	RS200-006	0.02	
5	50x50 Plug	4	Polyethylene Ld-PE	RS200-005	0.02	
4	Split pin 5x50-St	2	galvanized steel	RS200-004	0.01	
3	Flat washer $\varnothing 26$	2	galvanized steel	RS200-003	0.14	
2	Wheel $\varnothing 400$	2	Rubber / galvanized steel	RS200-002	6.95	
1	Spacer sleeve	2	Nylon Pa-66	RS200-001	0.01	
Nr części. (Part No)	Nazwa części/zespołu (Part/Assembly name)	L. sztuk (quantity)	Materiał (Material)	Nr rysunku lub normy (Drawing No or standard)	Ciężar [kg] (Weight)	Uwagi (Notice)

MARKING:

101



RS200-980
[RS200 "Serial number" - Label]

"Serial number" Label covered with transparent tape



FIGURE 1, 2, 3

Insert end of strap through slot in ratchet reel and pull until snug. Tighten the strap by pumping the handle until secure. A minimum of two turns of webbing should be around the reel after tensioning.

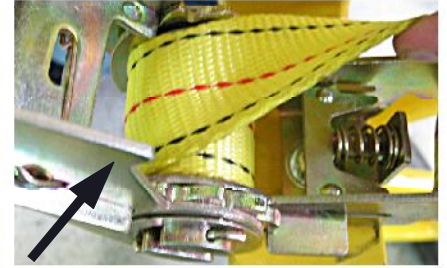
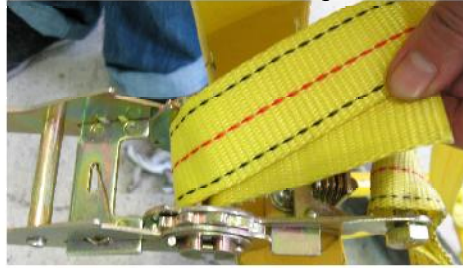
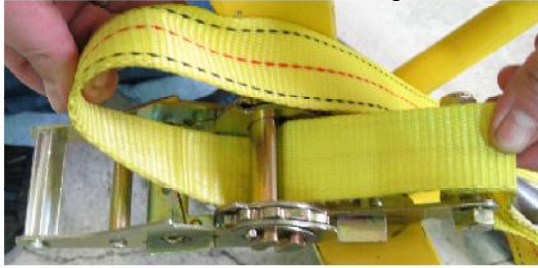


FIGURE 4

Pull back plunger and remove handle. Place strap on the ground and roll a pipe on it.

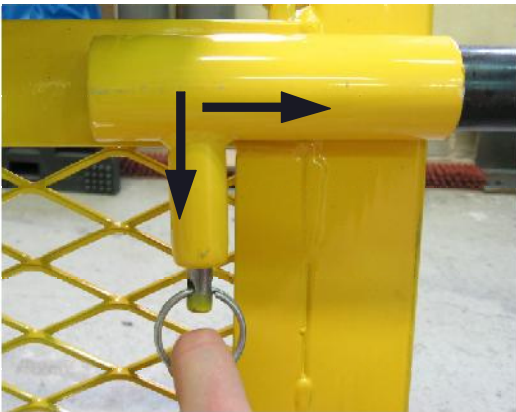


FIGURE 5

Put Pipe Trolley on top of the pipe.



FIGURE 6

Attach te strap hooch to the triangle screw link.



FIGURE 7

Ratchet strap tightly.

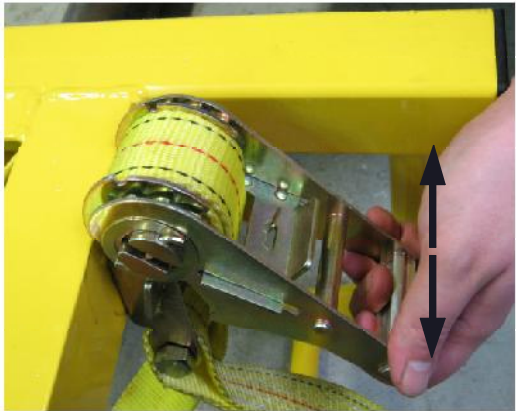


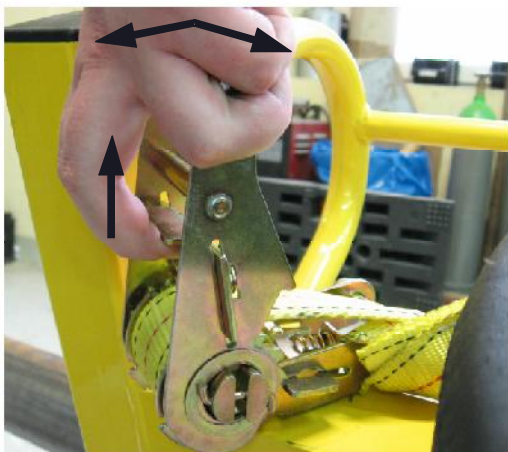
FIGURE 8, 9

Put the handle through the side slot in upright position. Using leverage, lift cart up and walk over the pipe. Continue to pull handle to flip Pipe Trolley onto its wheels. Rotate handle 180° as cart repositions. Replace handle to the original position and secure with plunger pin.



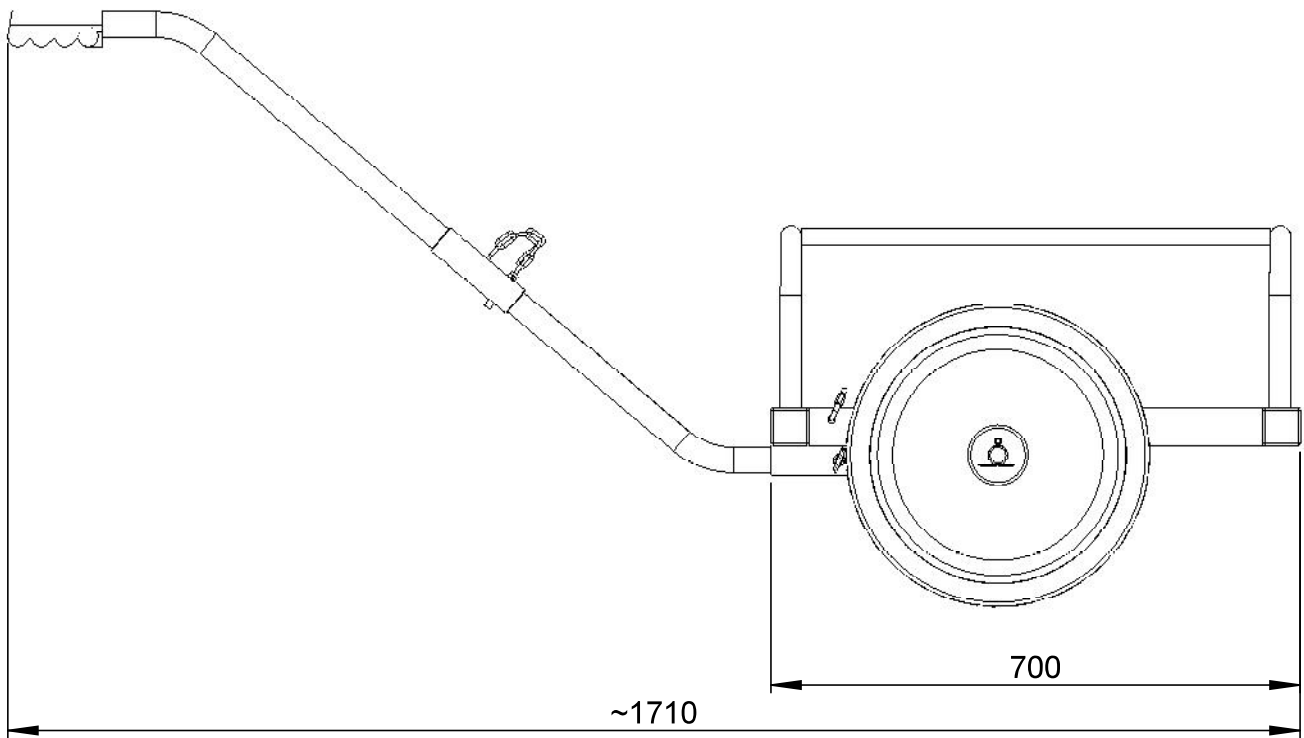
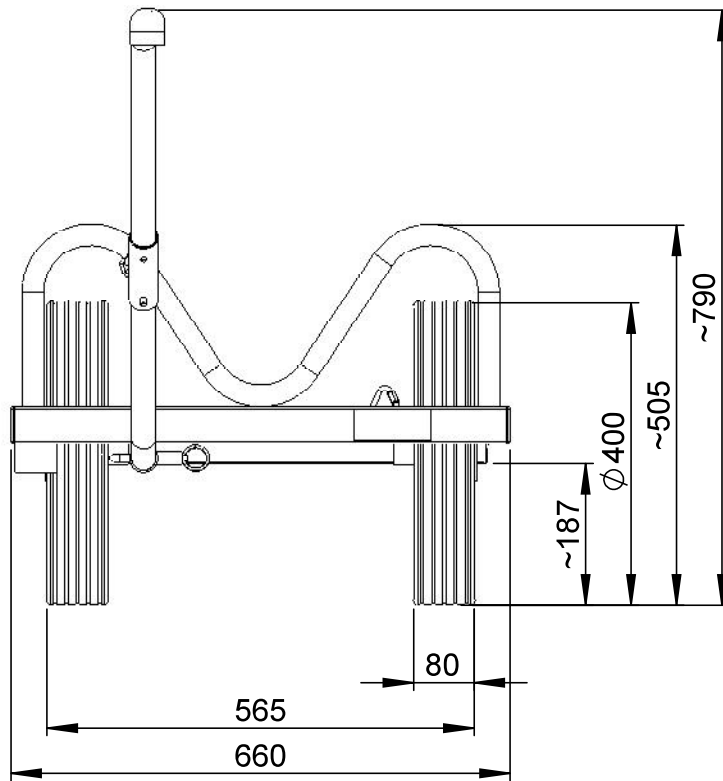
FIGURE 10

To release, pull back on handle latch and rotate the handle approximately 180°.



RS200 PIPE TROLLEY PARAMETERS:

- Working Load Limit : 500 kg
- Max. Pipe Diameter : 300 mm
- Max. Pipe Length : 6-meter
- Weight : 42 kg
- Shipping dimensions : 72x67x33 cm



Part name

Pipe Trolley - dimensions

Ref. number

RS 200