



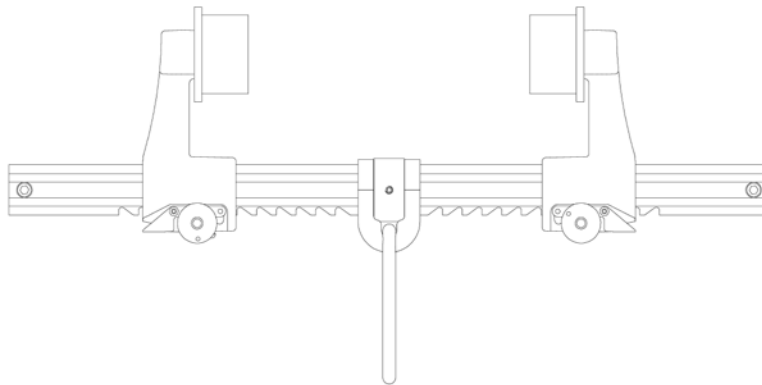
# User Instruction Manual

## Dual Beam Trolley Anchor

Model # GF-DSBT-BA01203

Model # GF-DSBT-BA01803

Model # GF-DSBT-BA02403



**[WWW.GFORCE-SAFETY.COM](http://WWW.GFORCE-SAFETY.COM)**

Tacklestore Ltd  
Unit R1D Rockingham Gate  
Cabot Park, Poplar Way West  
Bristol BS11 0YW  
Tel: 0808 123 69 69 Fax: 0117 9381 602  
Email: [sales@Safety-Lifting.Com](mailto:sales@Safety-Lifting.Com)

## Table of Contents

Warning and Important Notification .....	2
Dual Beam Trolley Anchor Components .....	2
Specifications .....	3
Applications .....	3-5
Installation and Use .....	6
Training.....	7
Inspection.....	7
Maintenance, Service, Storage.....	7
Inspection and Maintenance Log.....	8

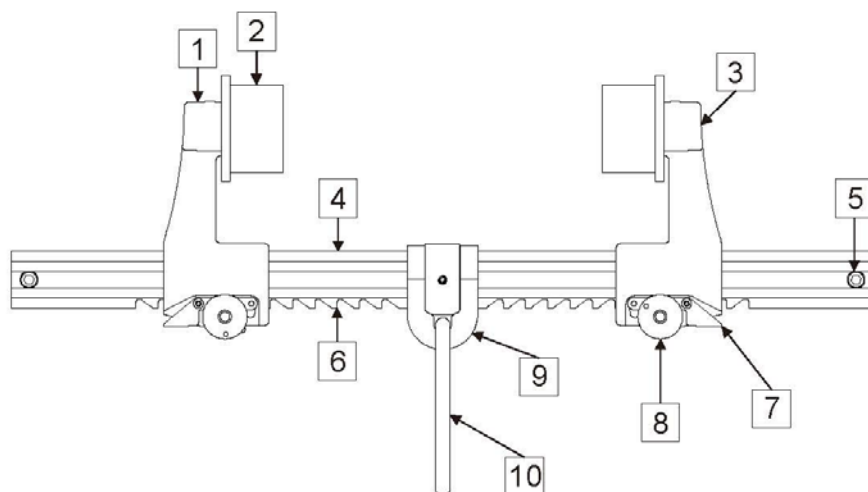
## **WARNING:**

This product is to be used as part of a personal fall protection system. The user must read the manufacturer's instruction and be familiar with each component of the equipment. The user must fully understand this instruction and must also be trained before using this equipment. This equipment must never be used for material lifting or any other use other than a fall protection system. This product is intended for the use by a single user. Any alteration and misuse of this equipment, or failure to follow instructions, may result in serious injury or death.

## **IMPORTANT:**

If you have questions on the use, care, installation or suitability of this Dual Beam Trolley Anchor for your application, please contact your dealers, distributors, or manufacturer for a guide.

### **DUAL BEAM TROLLEY ANCHOR COMPONENTS**



The Dual Beam Trolley Anchor consists of the following components:

- |                                    |                                     |
|------------------------------------|-------------------------------------|
| 1. Trolley Clamp                   | 6. Positioning ratchet for Lock Pin |
| 2. Trolley Wheel with Ball Bearing | 7. Safety Lock                      |
| 3. Nylon Nut                       | 8. Quick Release Lock Pin           |
| 4. Hexagonal Rod                   | 9. D-Ring Hanger                    |
| 5. End Screw w/Nylon Nut           | 10. D-Ring                          |

## SPECIFICATIONS

### Dimensions:

Beam Size Range:

Model # GF-DSBT-BA01203	12-in. (305mm) Maximum 2.5-in. (63.5mm) Minimum
Model # GF-DSBT-BA01803	18-in. (457mm) Maximum 2.5-in. (63.5mm) Minimum
Model # GF-DSBT-BA02403	24-in. (610mm) Maximum 2.5-in. (63.5mm) Minimum

Flange Thickness:

Model # GF-DSBT-BA01203	1.5-in.(38mm) Maximum
Model # GF-DSBT-BA01803	1.5-in.(38mm) Maximum
Model # GF-DSBT-BA02403	1.5-in.(38mm) Maximum

### Materials:

All materials used in the construction of this equipment are as follows:

- Stainless Steel
- Anodised Alloy Aluminium
- Plated Alloy Steel

### Weight:

Model GF-DSBT-BA01203: 6.61 LB (3.00KG)

Model GF-DSBT-BA01803: 7.23LB (3.28KG)

Model GF-DSBT-BA02403: 7.85LB (3.56KG)

## APPLICATIONS

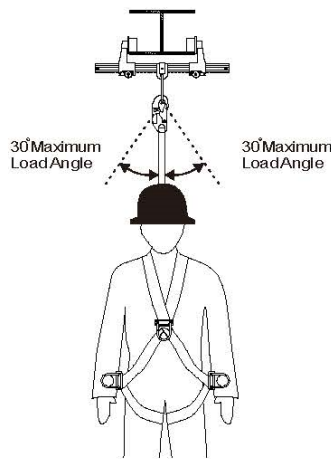
### Purpose:

The Dual Beam Trolley Anchor is used as an anchorage connector for a personal fall arrest system. It's designed to be attached on the Horizontal I-Beam. The Dual Beam Trolley Anchor provides a portable anchorage point for the connection of either a shock-absorbing lanyard or self-retracting lifeline for fall arrest, or with a fixed length restraint lanyard or a work positioning lanyard.

### Limitations:

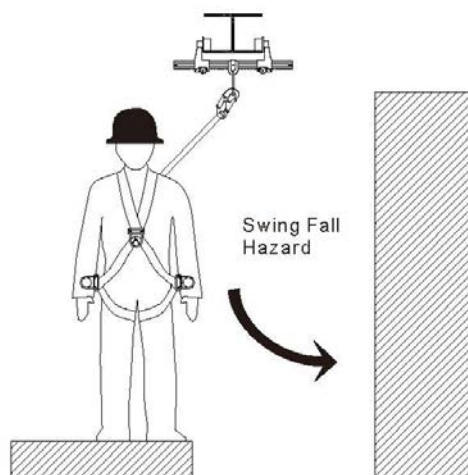
- **Beam Flange Sizes:** The Dual Beam Trolley Anchor may only be installed on beams with flanges within the adjustment range of the model. See the **SPECIFICATION**.
- **Capacity:** This Dual Beam Trolley Anchor is designed for one person use with a combined weight (clothing, tools, etc.) of no more than 310 lbs (140kgs). No more than one personal protective system may be connected to this equipment at one time. **\*\*SINGLE USER ONLY\*\***

- **Free Fall:** The Dual Beam Trolley Anchor must always be positioned, where possible, in the highest available and suitable location to reduce the possible free fall distance sustained during a fall. Suitable equipment with energy dissipating elements must be incorporated when there is a possibility of a worker falling whilst using the Dual Beam Trolley Anchor.
- **Trolley Load Angle:** Loads imposed on the Dual Beam Trolley Anchor by the personal fall arrest system must remain within 30 degrees of the vertical centre line of the beam.



Trolley Load Angle

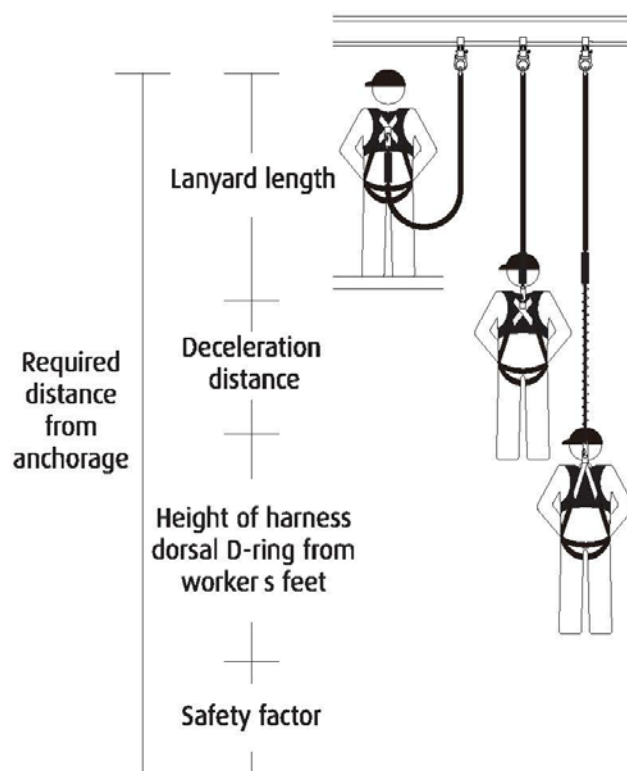
**Swing Falls:** Before installation or use, careful attention must be made to the possibility of pendulum affects resulting from a fall whilst working outside of 0 degrees vertical from the Dual Beam Trolley Anchor. It is advised that work is always completed a close to 0 degrees from the Dual Beam Trolley Anchor at all times. NEVER exceed a 30 degree working angle when using the Dual Beam Trolley Anchor.



Swing Falls

- **Fall Clearance:** There must be sufficient clearance below the anchorage connector to arrest a fall before the user strikes the ground or other obstruction. the clearance required is dependent on the following safety factors:
  - Elevation of Dual Beam Trolley Anchor
  - Length of connecting subsystem
  - Deceleration distance
  - Movement of harness attachment element
  - Worker height
  - Free fall distance

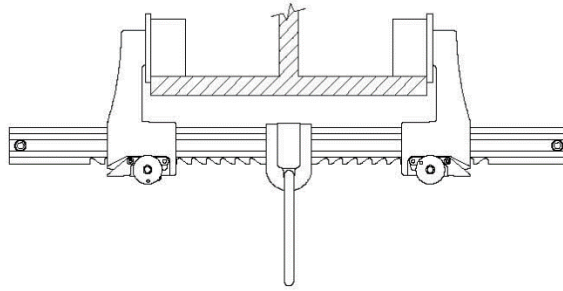
**Fall Clearance Diagram**



**Personal Fall Arrest System:** The Dual Beam Trolley Anchor is designed for use with Tacklestore approved components or CE/ANSI certified components. Use of this equipment with non-approved components may result in incompatibility between equipment, and could affect the reliability and safety of the complete system. A full body harness must be worn by the user when connected to the Dual Beam Trolley Anchor. When making connections with the Dual Beam Trolley Anchor, eliminate all possibility of roll-out. Roll-out occurs when interference between a hook and the attachment point causes the hook gate to unintentionally open and release. All connectors must conform to EN362 and be correctly installed. Screw gate Karabiners conforming to EN362 must have the screw type gate secured at all times during use.

## INSTALLATION AND USE

### Installation configuration:



Bottom Mount

Inspect the equipment according to the instructions of this manual before each use.

The Dual Beam Trolley Anchor could only be installed on any I-beam in a horizontal orientation. It can be installed to the top and the bottom of the I-beam.

Step 1. Remove the quick release lock pins. Then press the safety lock to adjust the trolley clamps.

Step 2. Place the Dual Beam Trolley Anchor onto beam flange on the bottom position of the I-beam.

Step 3. Place trolley clamp against one side of the beam flange. Slide the other trolley clamp against opposite side of the beam flange. Ensure the D-ring is at the middle position of the I-beam.

Step 4. Ensure the safety lock is in nearest position to the beam flange.

Step 5. Insert the quick release lock pins to fix the safety locks, ensuring pins are locked into place.

Step 6. Ensure the quick release lock pins have not bottomed out. If quick release pins have bottomed out, reinstall the trolley clamp to the next locking position. If the quick release lock pin is damaged or absent, the equipment is still in a workable condition. However, for safety concerning, when one of the quick release lock pins is damaged or absent, the equipment must be sent back to your dealers, distributors, or manufacturer to replace a new quick release lock pin.

## TRAINING

It is the responsibility of the users to assure that they are familiar with the instructions, and are trained in the correct care and use of this equipment. Users must also be aware of the operating characteristics, application limits, and the consequences of improper use of this equipment.

## INSPECTION

### **Frequency:**

Before each use, inspect the Dual Beam Trolley Anchor according to following steps and see **DUAL BEAM TROLLEY ANCHOR COMPONENTS** for part identification. The Dual Beam Trolley Anchor must be formally inspected by a competent person other than the user at least annually. Record the results in **INSPECTION AND MAINTENANCE LOG**.

### **Inspection Steps:**

- Step 1. Inspect Dual Beam Trolley Anchor for damage: Look for cracks, dents, or deformities. Look for bending or wear on the hexagonal rod, trolley clamps, safety lock, quick release lock pin, and trolley wheels. Ensure no parts are missing.
- Step 2. Inspect entire unit for excessive corrosion.
- Step 3. Ensure the quick release lock pin can be inserted through the hole on safety lock button, and locks in place.
- Step 4. Record the inspection date and results in the **INSPECTION AND MAINTENANCE LOG**.

If inspection reveals an unsafe or defective condition, remove the equipment from service and destroy, or return to Tacklestore for repair.

***NOTE:*** Only Tacklestore or parties authorised in writing are qualified to repair this equipment.

## MAINTENANCE, SERVICE, STORAGE

### **Cleaning:**

Periodically clean the Dual Beam Trolley Anchor by water and a mild soap solution. Do not use acids or other caustic chemicals that could damage the system components. A lubricant may be applied to the safety lock button and the quick release lock pin.

### **Storage:**

Store the equipment in a cool, dry, dark place, chemically neutral, away from sharp corners, sources of heat, humidity, corrosive substances or other damaging conditions.



## INSPECTION AND MAINTENANCE LOG

Company: \_\_\_\_\_ Location: \_\_\_\_\_ Date Purchased: \_\_\_\_\_  
 Serial Number: \_\_\_\_\_ Model Number: \_\_\_\_\_

Year	Date	By a Qualified Person	No Missing Parts	No Corrosion	No Deformation	Functioning Condition	No Changes to Attachment Structure
		Corrective Action		Maintenance Performed			
		Corrective Action		Maintenance Performed			
		Corrective Action		Maintenance Performed			
		Corrective Action		Maintenance Performed			
		Corrective Action		Maintenance Performed			
		Corrective Action		Maintenance Performed			
		Corrective Action		Maintenance Performed			
		Corrective Action		Maintenance Performed			
		Corrective Action		Maintenance Performe			