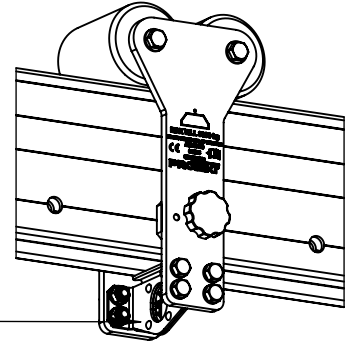


## SECTION 3 - LIFTING LOADS

External trolley ASB500-200 can be used with ASB/LSB for lifting loads up to Working Load Limit (WLL) indicated on the beam. One beam can be used with more than one external trolley. Loads suspended on several external trolleys **MUST NOT** exceed WLL indicated on the beam. For personal protection during lifting loads please refer to Section 5.



### ASB500-200 EXTERNAL TROLLEY ATTACHMENT POINT FOR LIFTING LOADS lifting loads up to Beam WLL.

#### DEVICE LOAD CARRYING CAPACITY

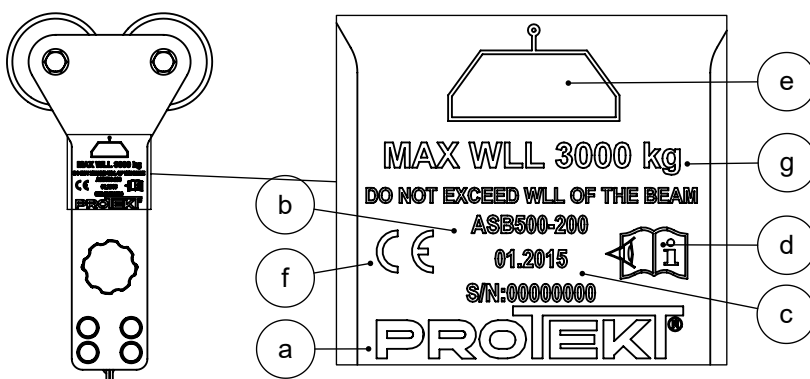
The load hoisted by the ASB/LSB device may be connected to the external trolley attachment point using chain hoists or other lifting devices with appropriate load carrying capacity. External trolley is installed on the beam. Maximum operating carrying capacity of the device is indicated on the beam.

DO NOT exceed Working Load Limit (WLL) indicated on the beam.

#### GENERAL PRECAUTIONS FOR LIFTING LOADS

- ASB/LSB device is used for lifting and lowering loads weighing up to WLL indicated on the beam.
- External trolley is not an emergency device for lifting people and it should not be used for this purpose.
- Do not use a ASB/LSB device contrary to its intended use.
- Do not lift loads over an area occupied by people.
- Do not change the device design, repair or replaceable elements included in the kit.
- Before each use of the device, carry out thorough inspection to check the device condition and proper operation. Carefully check all parts, paying particular attention to any damage, excessive wear, corrosion, abrasion, cuts and malfunction.
- The device must be immediately withdrawn from use if there is any doubt about the condition of the device or its operation. The device may be readmitted for use only after a manufacturer's detailed inspection, and manufacturer's written consent for its use.
- Position ASB device on a flat, hard and stable surface, free of loose materials, such as rocks, debris etc.
- Check the stability of the load attached to the internal trolley attachment point or cable, on which it is hoisted, to prevent accidental detachment of any of the elements.
- The use of the device with other devices (such as devices for lifting and lowering loads) must be in accordance with the instruction for use of these devices.
- It is forbidden to use the kits in which the ASB/LSB device is included, in which the operation of any component disrupts the operation of other components.
- In case of any doubts as to the condition and usage of this device, please contact the manufacturer of the device.
- Avoid working where user may swing and hit an object or where lines may cross or tangle with that of another worker in the area.

#### EXTERNAL TROLLEY MARKING



#### CONTENT OF EXTERNAL TROLLEY MARKING:

- a) Marking of the manufacturer or distributor.
- b) Model symbol / reference number.
- c) Month and year of manufacture / Serial number.
- d) Caution: read the manual.
- e) Device for lifting loads.
- f) CE marking.
- g) Maximum Working Load Limit notice.

## SECTION 4

# PERSONAL PROTECTION ACCORDING TO EN 795 AND TS 16415

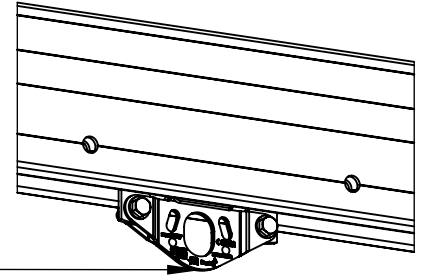
ASB/LSB with internal trolley (ASB500-250) can be used as a temporary anchorage according to EN 795 and TS 16415.

ASB device provides protection for maximum five people at the same time.

ASB with combined beam provides protection for maximum two people at the same time.

LSB device provides protection for maximum three people at the same time.

For personal protection during lifting loads please refer to Section 5.



**ASB500-250 INTERNAL TROLLEY**  
**ATTACHMENT POINT FOR PERSONAL PROTECTION**  
**one person (EN 795)**

**ASB MAX 5 pcs.**  
**LSB MAX 3 pcs.**

### ***RULES FOR PERSONAL PROTECTION:***

1. ONE internal trolley can be used by ONE person at the same time.
2. For ASB maximum FIVE people can be attached to the available attachment points at the same time.
3. For ASB combined beam TWO people can be attached to the available attachment points at the same time.
4. For LSB maximum THREE people can be attached to the available attachment points at the same time.
5. Anchor points designed for personal protection should ONLY be used for personal fall protection equipment and NOT for lifting equipment.

### **GENERAL PRECAUTIONS**

- AVOID working where the user may swing and hit an object or where lines may cross or tangle with that of another worker in the area.
- Fall arrest and rescue systems used with this device MUST MEET applicable EN standards requirements (EN 795 for anchor devices; EN 362 for connectors; EN 361 for full body harnesses; EN 360 for retractable type fall arresters; EN 1496 for rescue lifting devices; EN 1497 for rescue harnesses; EN 341 for descender devices).
- The Maximum Arrest Force (MAF) to which a user of a Fall Arrest System (FAS), who wears a full body harness, is exposed during an arrest of his/her fall is limited by law 6 kN in EU. The system used to protect user against fall from height must include fall protection equipment reducing the Maximum Arrest Force, acting on the user while arresting the fall, to maximum value of 6kN (e.g. fall safety energy absorber with lanyard or retractable fall arrester).
- Make sure that device is installed in a upright position on a flat, stable and hard surface. The surface must support the load.
- DO NOT use ASB device for more than five people at the same time.
- It is recommended that the device should be transported and installed by minimum two people.
- The anchor device or anchor point for the fall arrest system should always be positioned, and the work carried out in such a way, as to minimize both the potential for falls and potential fall distance. The anchor device/point should be placed above the position of the user. The shape and construction of the anchor device/point shall not allowed to self-acting disconnection of the equipment. Minimal static strength of the anchor device/point is 12 kN. It is recommended to use certified and marked structural anchor point complied with EN 795.

### **THE ESSENTIAL PRINCIPLES OF USE OF PERSONAL PROTECTIVE EQUIPMENT**

- Personal Protective Equipment (PPE) shall only be used by a person trained and competent in its safe use.
- PPE must not be used by a person with medical condition that could affect the safety of the equipment user in normal and emergency use.
- A rescue plan shall be in place to deal with any emergencies that could arise during the work.
- It is forbidden to make any alterations or additions to the equipment without the manufacturer's prior written consent.
- Any repair shall only be carried out by equipment manufacturer or his certified representative.
- PPE shall not be used outside its limitations, or for any purpose other than that for which it is intended.
- PPE should be a personal issue item.
- Before use ensure about the compatibility of items equipment assembled into fall arrest system. Periodically check connecting and adjusting of the equipment components to avoid accidental loosening or disconnecting of the components.
- It is forbidden to use combinations of items of equipment in which the safe function of any one item is affected by or interferes with the safe function of another.
- It is essential for the safety of the user that if the product is re-sold outside the original country of destination the reseller shall provide instruction for use, for maintenance, for periodic examination and for repair in language of the country in which the product is to be sold.
- A full body harness (conforming EN 361) is the only acceptable body holding device that can be used in a fall arrest system.
- On full body harness use only attaching points marked with big letter "A" to attach a fall arrest system.
- It is obligatory to verify the free space required beneath the user at the workplace before each occasion of use the fall arrest system, so that, in the case of a fall, there will be no collision with the ground or other obstacle in the fall path. The required value of the free space should be taken from instruction manual of used equipment.
- There are many hazards that may affect the performance of the equipment and corresponding safety precautions that have to be observed during equipment utilization, especially:
  - trailing or looping of lanyards or lifelines over sharp edges,
  - any defects like cutting, abrasion, corrosion,
  - climatic exposure,
  - pendulum falls,
  - extremes of temperature,
  - chemical reagents,
  - electrical conductivity.

## **INSPECTION**

Before each use of personal protective equipment it is obligatory to carry out a pre-use check of the equipment, to ensure that it is in a serviceable condition and operates correctly before it is used.

During pre-use check it is necessary to inspect all elements of the equipment in respect of any damages, excessive wear, corrosion, abrasion, cutting or incorrect acting, especially take into consideration:

- in full body harnesses and belts - buckles, adjusting elements, attaching points, webbings, seams, loops;
- in energy absorbers - attaching loops, webbing, seams, casing, connectors;
- in textile lanyards or lifelines or guidelines - rope, loops, thimbles, connectors, adjusting elements, splices;
- in steel lanyards or lifelines or guidelines - cable, wires, clips, ferrules, loops, thimbles, connectors, adjusting elements;
- in retractable fall arresters - cable or webbing, retractor and brake proper acting, casing, energy absorber, connector;
- in guided type fall arresters - body of the fall arrester, sliding function, locking gear acting, rivets and screws, connector, energy absorber;
- in connectors - main body, rivets, gate, locking gear acting;
- in tripods - legs, safety pins, eye bolts, feet, chain, connecting elements.

## **PERIODIC INSPECTION**

After every 12 months of utilization, personal protective equipment must be withdrawn from use to carry out periodical detailed inspection. The periodic inspection must be carried out by a competent person who has the knowledge and training required for personal protective equipment periodic inspections. The periodic inspection can be carried out also by the manufacturer or his authorized representative. In case of some types of the complex equipment e.g. some types of retractable fall arresters the annual inspection can be carried out only by the manufacturer or his authorized representative.

During this inspection will be established admissible time of the device use till next manufacturer's inspection.

The result of the inspection must be recorded in Identity Card.

Regular periodic inspections are the essential for equipment maintenance and the safety of the users which depends upon the continued efficiency and durability of the equipment.

During periodic inspection it is necessary to check the legibility of the equipment marking.

## **MAXIMUM LIFESPAN**

Maximum lifespan of the ASB500-250 internal trolley is unlimited but its depends on the intensity of usage and the environment of use. Using the device in rough environment, marine, contact with sharp edges, exposure to extreme temperatures or aggressive substances, etc. can lead to the withdrawal from use even after one use.

## **WITHDRAWAL FROM USE**

Personal protective equipment must be withdrawn from use immediately when any doubt arise about its condition for safe use and not used again until confirmed in writing by equipment manufacturer or his representative after carried out the detailed inspection.

## **WITHDRAWN FROM USE AFTER ARRESTING A FALL**

Device must be withdrawn from use immediately when it have been used to arrest a fall. After that must be carried out detailed manufacturer's inspection of the tripod.

The manufacturer's inspection can be carried out by:

- manufacturer
- person recommended by manufacturer
- company recommended by manufacturer.

During this inspection will be established if the tripod can be longer used and will be define the admissible time of tripod use till next manufacturer's inspection and recorded in Identity Card.

## **TRANSPORTATION**

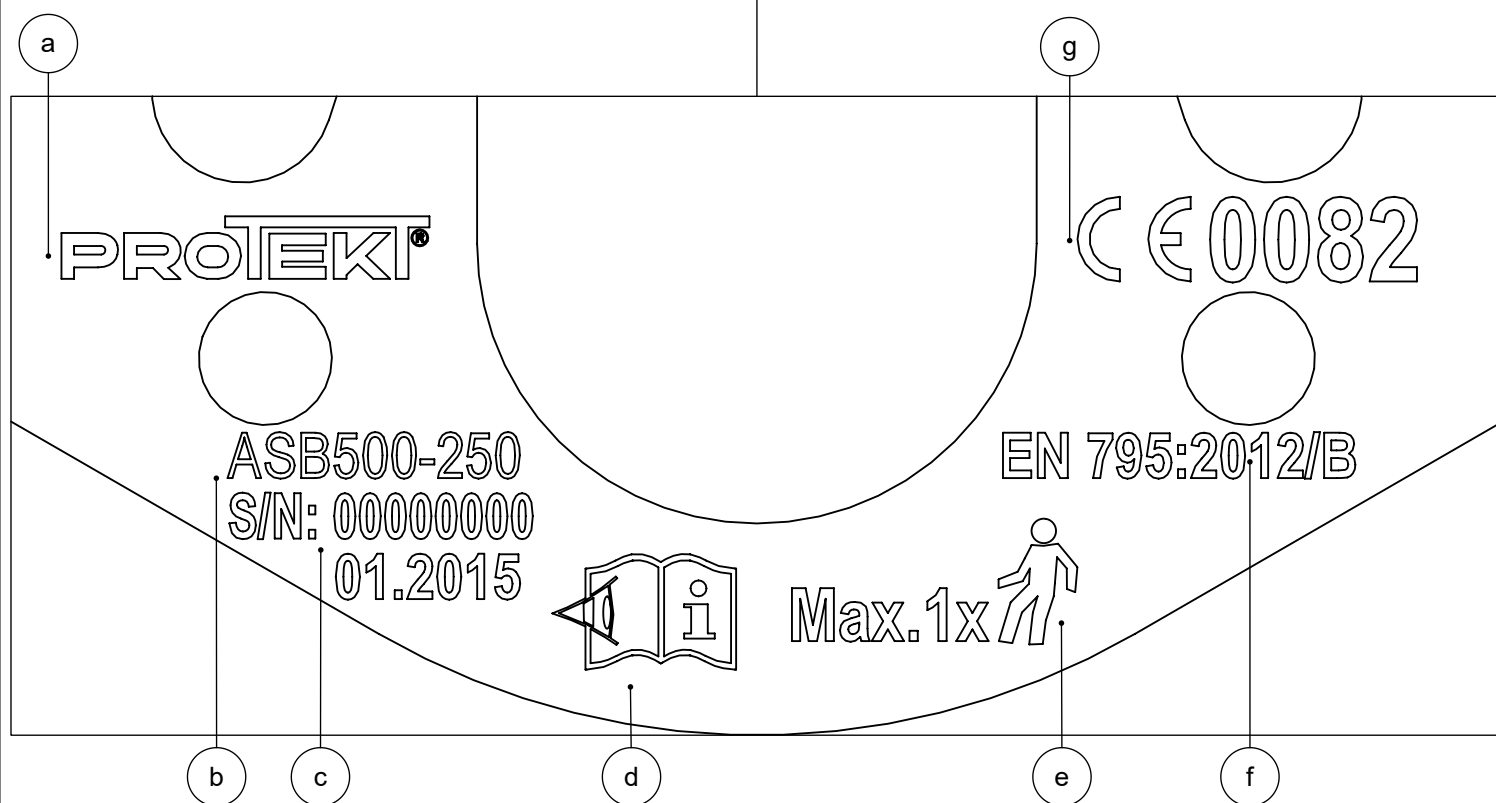
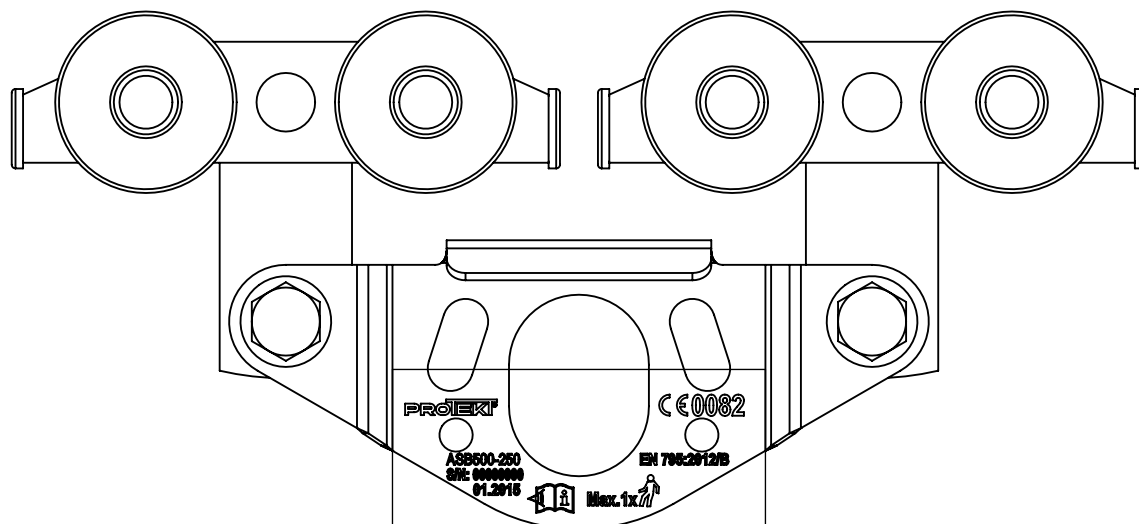
Personal protective equipment must be transported in the package (e.g.: bag made of moisture-proof textile or foil bag or cases made of steel or plastic) to protect in against damage or moisture.

## **MAINTENANCE AND STORAGE**

The equipment can be cleaned without causing adverse effect on the materials in the manufacture of the equipment. For textile products use mild detergents for delicate fabrics, wash by hand or in a machine and rinse in water. Plastic parts can be cleaned only with water. When the equipment becomes wet, either from being in use or when due cleaning, it shall be allowed to dry naturally, and shall be kept away from direct heat. In metallic products some mechanic parts (spring, pin, hinge, tec.) can be regularly slightly lubricated to ensure better operation. Other maintenance and cleaning procedures should be adhered to detailed instructions stated in the manual of the equipment.

Personal protective equipment should be stored loosely packed, in a well-ventilated place, protected from direct light, ultraviolet degradation, damp environment, sharp edges, extreme temperatures and corrosive or aggressive substances.

## INTERNAL TROLLEY MARKING



### CONTENT OF INTERNAL TROLLEY MARKING:

- a) Marking of the manufacturer or distributor.
- b) Model symbol / reference number.
- c) Month and year of manufacture / Serial number.
- d) Caution: read the manual.
- e) Maximum number of users permitted simultaneously.
- f) Number / year / type of the European standard.
- g) CE marking and number of the notified body controlling manufacturing of the equipment.

## SECTION 5

# LIFTING LOADS AND PERSONAL PROTECTION AT THE SAME TIME

**Before read this section please refer to Section 3 and Section 4 (All recommendations contained in these Sections apply in Section 5).**

- ASB/LSB device can be used for lifting/lowering loads and personnel protection at the same time.
- For lifting loads external trolley and other lifting equipment can be used.
- For personal protection internal trolley can be used.
- When personnel is protected using internal trolley(s) during lifting/lowering load(s) Working Load Limit (WLL) indicated on the beam must be reduced to the Reduced Working Load Limit (RWLL). RWLL depends on the amount of protected employees.



PERMITTED CONFIGURATION	REDUCED WORKING LOAD LIMIT RWLL =
Lifting loads only	RWLL =
Lifting loads + 1 person protected	= WLL - 600kg
Lifting loads + 2 people protected	= WLL - 650kg
Lifting loads + 3 people protected	= WLL - 700kg
Lifting loads + 4 people protected	= WLL - 750kg
Lifting loads + 5 people protected	= WLL - 800kg

**IF RWLL VALUE IS NEGATIVE  
THE DEVICE CANNOT BE USED FOR  
LIFTING/LOWERING LOADS AND PERSONNEL PROTECTION AT THE SAME TIME.**

### example 1:

WLL indicated on the ASB 6-meter beam = 2000kg

3 people protected on three internal trolleys

$RWLL = WLL - 700kg = 2000kg - 700kg = 1300kg$

results: device can be used at the same time for personnel protection (3 people) and for lifting/lowering loads (up to 1300kg).

### example 2:

WLL indicated on the LSB 7-meter beam = 500kg

3 people protected on three internal trolleys

$RWLL = WLL - 700kg = 500kg - 700kg = -200kg$

results: device CANNOT BE used at the same time for personnel protection and for lifting/lowering loads.

## GENERAL PECAUTIONS:

- DO NOT exceed Reduced Working Load Limit (RWLL) during lifting/lowering loads when the people are protected using internal trolleys.
- **LSB device CANNOT be used for lifting/lowering loads and personnel protection at the same time if RWLL value is negative.**
- For personal protection please refer to Section 4!
- For lifting loads please refer to Section 3!

## RWLL VALUE [kg] DEPENDING ON BEAM LENGTH AND NUMBER PROTECTED USERS

	WLL material only		RWLL 1 person		RWLL 2 people		RWLL 3 people		RWLL 4 people		RWLL 5 people	
	ASB	LSB	ASB	LSB	ASB	LSB	ASB	LSB	ASB	LSB	ASB	LSB
2m beam	3000	1750	2400	1150	2350	1100	2300	1050	2250	1000	2200	950
3m beam	3000	1500	2400	900	2350	850	2300	800	2250	750	2200	700
4m beam	3000	1250	2400	650	2350	600	2300	550	2250	500	2200	450
5m beam	2500	1000	1900	400	1850	350	1800	300	1750	250	1700	200
6m beam	2000	750	1400	150	1350	100	1300	50	1250	n/a	1200	n/a
7m beam	1500	500	900	n/a	850	n/a	800	n/a	750	n/a	700	n/a

n/a - not applicable

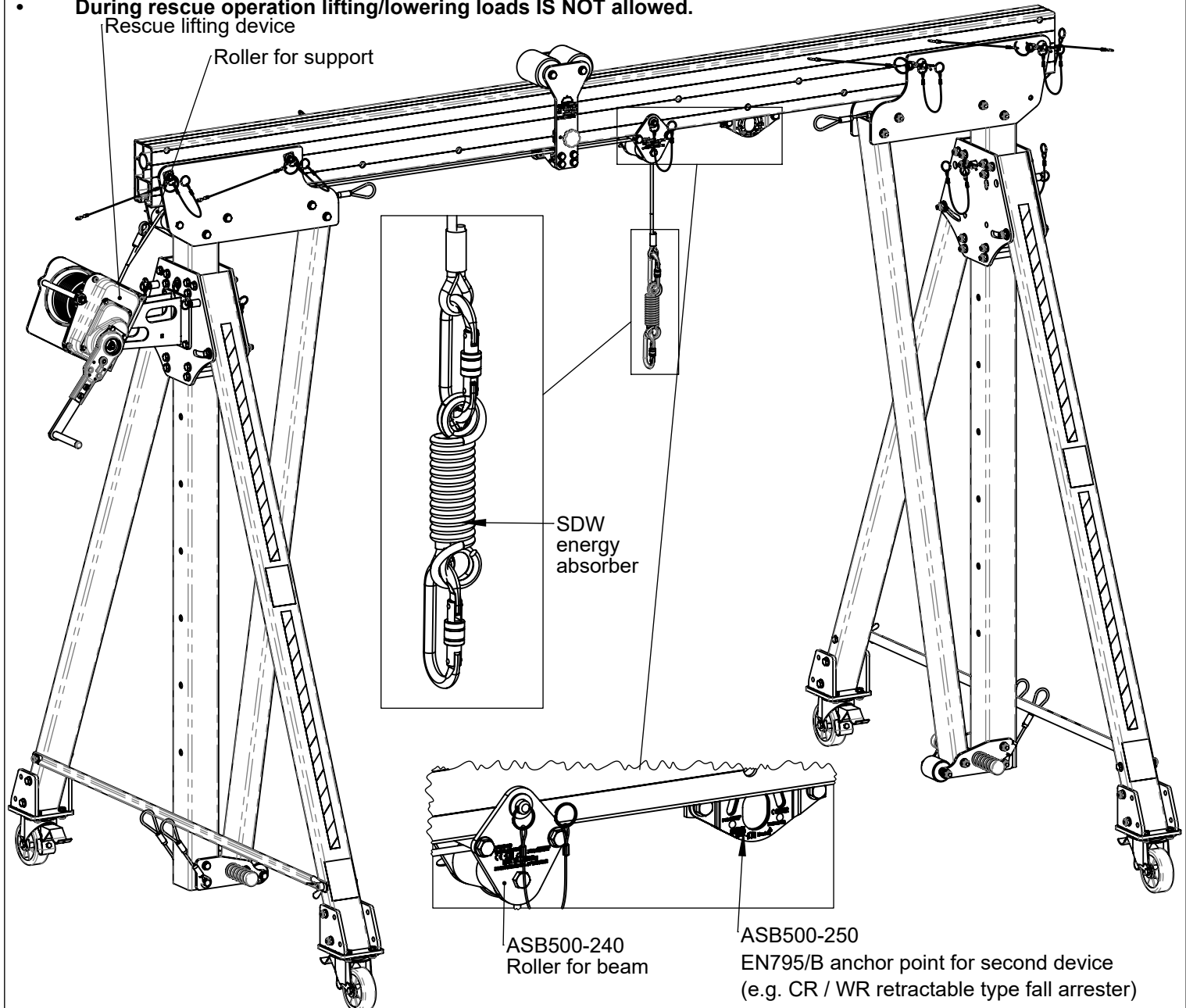
## SECTION 6 - RESCUE ACCORDING TO EN 1496/B

### GENERAL PECAUTIONS FOR RESCUE:

- Secondary fall arrest system (conforming EN 363) must be used when working with ASB/LSB and RUP 50x-C / RUP50x-D / CRW200 / CRW300.
- Fall arrest and rescue system used with this device MUST MEET applicable EN standards requirements (EN 795 and TS 16415 for anchor devices; EN 362 for connectors; EN 361 for full body harnesses; EN 360 for retractable type fall arresters; EN 1496 for rescue lifting devices; EN 1497 for rescue harnesses; EN 341 for descender devices).

### USAGE ASB DEVICE FOR RESCUE PURPOSES

- ASB/LSB device can be used for rescue purposes in conjunction with RUP 50x-C / RUP 50x-D rescue lifting devices and CRW200 / CRW300 rescue lifting device.
- RUP50x-D devices can be installed only on supports side plates equipped with two additional holes - please refer to Section 2 Points 9.2 and 9.3.
- Rescue lifting device rope installation - please refer to Section 2 Point 10.
- CRW200 / CRW300 device installation - please refer to Section 6.
- **RUP50x-C / RUP 50x-D Rescue lifting device MUST BE used with SDW energy absorber installed on the end of the wire rope!**
- **During rescue operation lifting/lowering loads IS NOT allowed.**



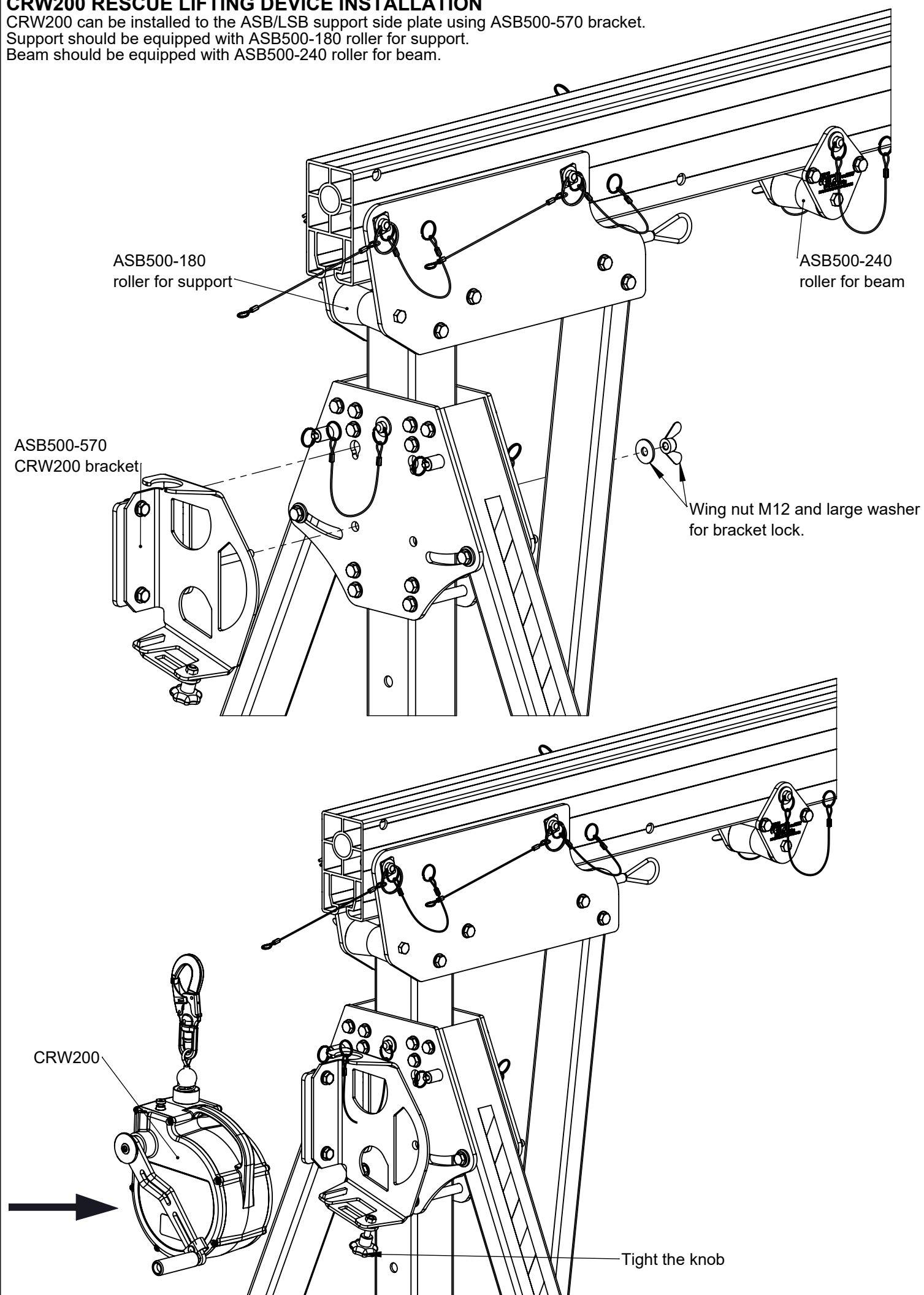
### USE LIFTING EQUIPMENT AS PERSONAL PROTECTIVE EQUIPMENT

This device can be used as a personal protective equipment exceptionally according to Directive 2009/104/EC Annex II section 3.1.2.

- While workers are on work equipment designed for lifting loads the control position must be manned at all times.
- Persons being lifted must have reliable means of communication. In the event of danger, there must be reliable means of evacuating them.
- During rescue action always use SDW energy absorber at the end of the rescue lifting device rope.
- Absolutely not exceed the Working Load Limit.
- Be particularly careful. Do not overload these device parts. During the use of equipment for lifting loads for the purpose of personal rescue user must be particularly careful and frequently check the condition of components of the set (rope, pulleys, anchor points).
- For personal rescue purposes safety factor must be, at least 10:1.
- For safety reasons, is better to use two winches (one for lifting loads and one for personal protective use).

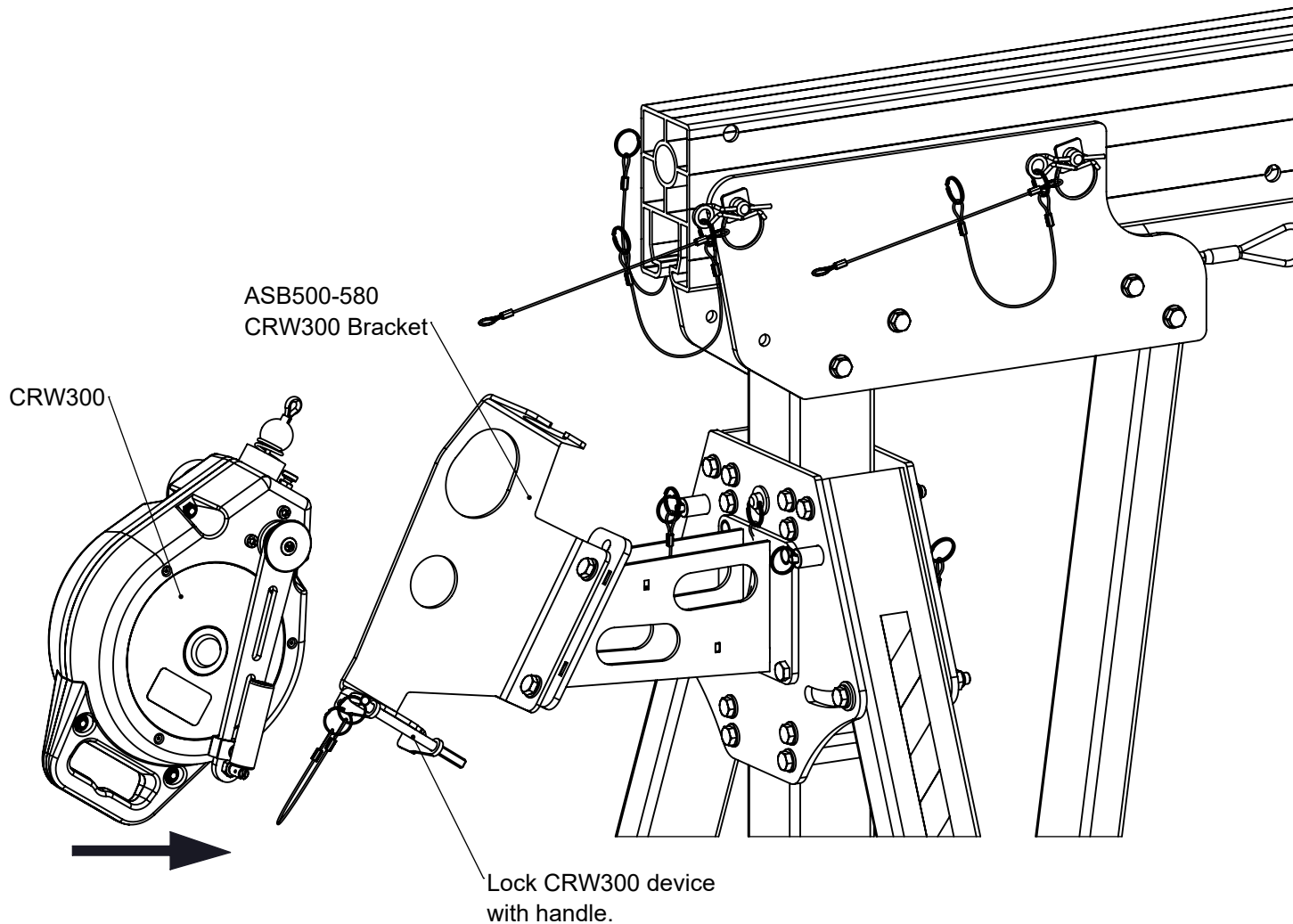
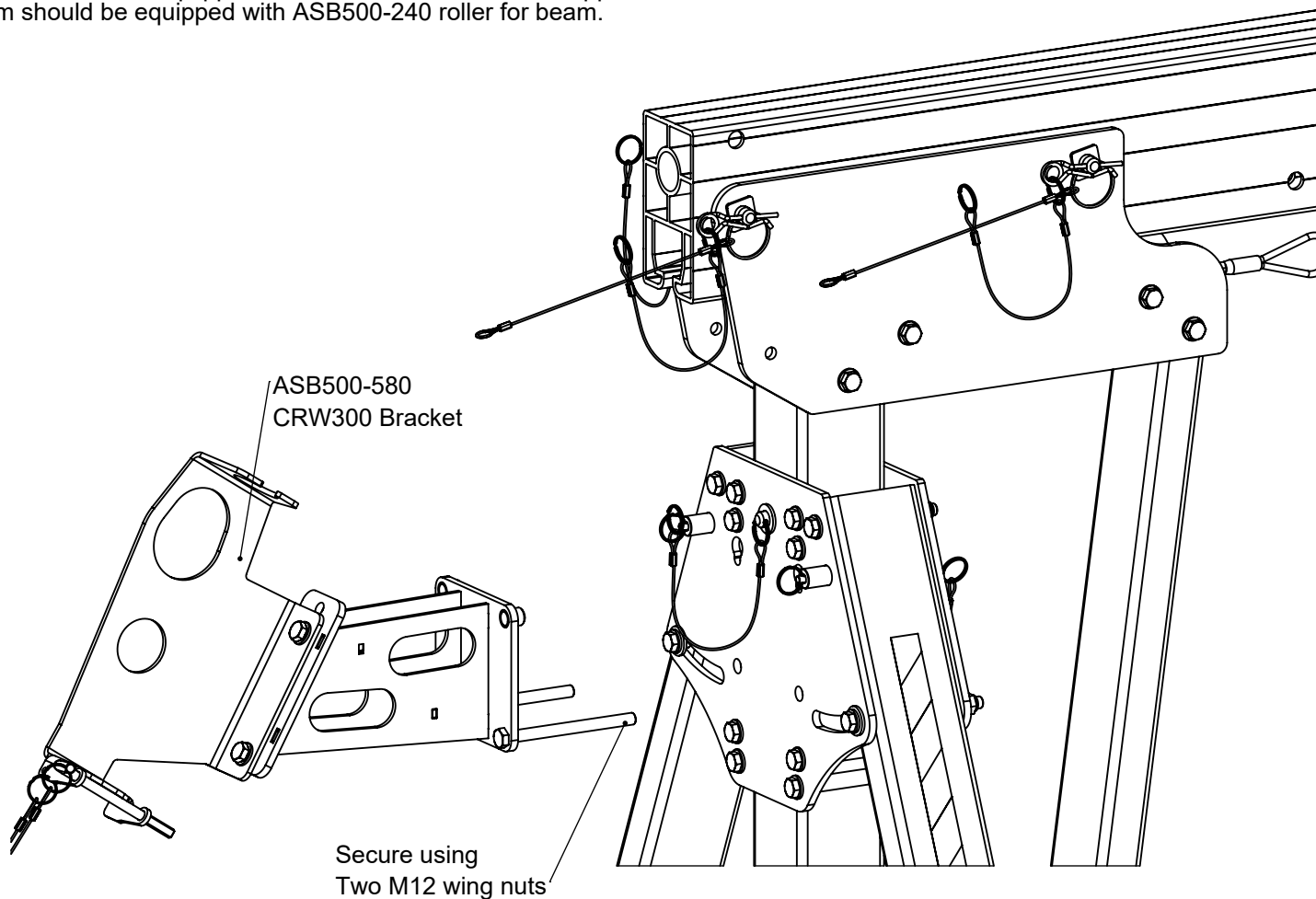
## CRW200 RESCUE LIFTING DEVICE INSTALLATION

CRW200 can be installed to the ASB/LSB support side plate using ASB500-570 bracket.  
Support should be equipped with ASB500-180 roller for support.  
Beam should be equipped with ASB500-240 roller for beam.



## CRW300 RESCUE LIFTING DEVICE INSTALLATION

CRW300 can be installed to the ASB/LSB support side plate using ASB500-580 bracket.  
Support should be equipped with ASB500-180 roller for support.  
Beam should be equipped with ASB500-240 roller for beam.





# IDENTITY CARD

IT IS RESPONSIBILITY OF THE USER ORGANISATION TO PROVIDE THE IDENTITY CARD AND TO FILL IN THE DETAILS REQUIRED. THE IDENTITY CARD SHOULD BE FILLED IN ONLY BY COMPETENT PERSON RESPONSIBLE FOR PROTECTIVE EQUIPMENT. THE IDENTITY CARD SHOULD BE FILLED IN BEFORE THE FIRST USE OF THE EQUIPMENT. ANY INFORMATION ABOUT THE EQUIPMENT LIKE: PERIODIC INSPECTIONS, REPAIRS, REASONS OF EQUIPMENT'S WITHDRAWN FROM USE SHALL BE NOTED. THE IDENTITY CARD SHOULD BE STORED DURING A WHOLE PERIOD OF EQUIPMENT UTILIZATION. DO NOT USE THE EQUIPMENT WITHOUT THE IDENTITY CARD.

**DEVICE REF NUMBER**

**\_ SB - \_ \_ - W \_**

**BEAM S/N**

**SUPPORT S/N**

**MATERIAL TROLLEY S/N**

**DATE OF MANUFACTURE**

**DATE OF PURCHASE**

**DATE OF FIRST USE**

**USER NAME**

## PERIODIC EXAMINATION AND REPAIR HISTORY

	DATE	REASON FOR SERVICING / REPAIR	REPAIRS CARRIED OUT	NAME AND SIGNATURE OF COMPETENT PERSON	DATE OF NEXT EXAMINATION
1					
2					
3					
4					
5					
6					
7					
8					
9					
10					
11					
12					
13					

### PRODUCER:

PROTEKT, 93-403 LODZ, ul. Starorudzka 9, POLAND, tel: +48 (42) 680 20 83, fax: +48 (42) 680 20 93, [www.protekt.com.pl](http://www.protekt.com.pl)

# IDENTITY CARD

IT IS RESPONSIBILITY OF THE USER ORGANISATION TO PROVIDE THE IDENTITY CARD AND TO FILL IN THE DETAILS REQUIRED. THE IDENTITY CARD SHOULD BE FILLED IN ONLY BY COMPETENT PERSON RESPONSIBLE FOR PROTECTIVE EQUIPMENT. THE IDENTITY CARD SHOULD BE FILLED IN BEFORE THE FIRST USE OF THE EQUIPMENT. ANY INFORMATION ABOUT THE EQUIPMENT LIKE: PERIODIC INSPECTIONS, REPAIRS, REASONS OF EQUIPMENT'S WITHDRAWN FROM USE SHALL BE NOTED. THE IDENTITY CARD SHOULD BE STORED DURING A WHOLE PERIOD OF EQUIPMENT UTILIZATION. DO NOT USE THE EQUIPMENT WITHOUT THE IDENTITY CARD.

**MODEL AND TYPE OF EQUIPMENT**

**INTERNAL TROLLEY**  
**(for personal protection)**

**REF. NUMBER**

**ASB500-250**

**SERIAL NUMBER**

**DATE OF MANUFACTURE**

**DATE OF PURCHASE**

**DATE OF FIRST USE**

**USER NAME**

## PERIODIC EXAMINATION AND REPAIR HISTORY

	DATE	REASON FOR SERVICING / REPAIR	REPAIRS CARRIED OUT	NAME AND SIGNATURE OF COMPETENT PERSON	DATE OF NEXT EXAMINATION
1					
2					
3					
4					
5					
6					
7					
8					
9					
10					
11					
12					
13					
14					

### PRODUCER:

PROTEKT, 93-403 LODZ, ul. Starorudzka 9, POLAND, tel: +48 (42) 680 20 83, fax: +48 (42) 680 20 93, [www.protekt.com.pl](http://www.protekt.com.pl)