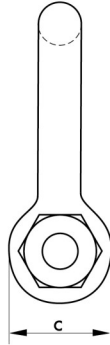
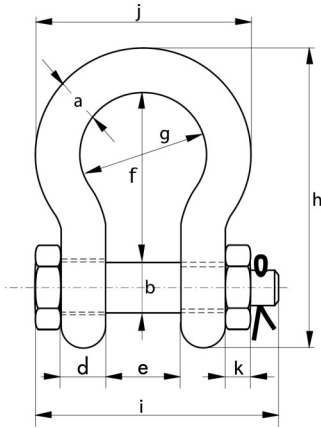




Green Pin® Polar Shackle G-5163

Bow Shackle with Safety Bolt



Material

Bow and pin alloy steel, Grade 8, quenched and tempered

Safety Factor

MBL equals 8 x WLL,
MBL equals 6 x WLL, for shackles WLL 55t and 85t

Standard

EN 13889, ASME B30.26 and meets performance requirements of US Fed Spec. RR-C-271 Type IVA Class 3, Grade A

Finish

Hot dipped galvanised

Temp Range

-60°C up to +200°C

Certification

As standard; EC Declaration of Conformity
Upon request; 2.1, 2.2, 3.1, MTC^a, CE, DNV 2.7-1 a, DNV 2.7-1 b, DNV 2.22

WLL	Diameter Bow	Diameter Pin	Diameter Eye	Width Eye	Width Inside	Length Inside	Width Bow	Length h	Length i	Width j	Thickness Nut	Product Code	Weight Each
t	a	b	c	d	e	f	g	h	i	j	k		kg
2	13.5	16	34	13	22	51	32	89	82	58	13	13001A	0.42
3.25	16	19	40	16	27	64	43	110	98	75	17	13002A	0.74
4.75	19	22	46	19	31	76	51	129	114	89	19	13003A	1.18
6.5	22	25	52	22	36	83	58	144	130	102	22	13004A	1.77
8.5	25	28	59	25	43	95	68	164	150	118	25	13005A	2.58
9.5	28	32	66	28	47	108	75	185	166	131	27	13006A	3.66
12	32	35	72	32	51	115	83	201	178	147	30	13007A	4.91
13.5	35	38	80	35	57	133	92	227	197	162	33	13008A	6.54
17	38	42	88	38	60	146	99	249	202	175	19	13009A	8.19
25	45	50	103	45	74	178	126	300	249	216	23	13010A	14.22
35	50	57	116	50	83	197	138	334	269	238	26	13011A	19.85
42.5	57	65	130	57	95	222	160	377	301	274	29	13012A	28.33
55	65	70	145	65	105	260	180	433	330	310	32	13013A	39.59
85	75	83	162	73	127	329	190	527	380	340	39	13014A	62.00

Contact Us

Tel: 0117 9381 600
Fax: 0117 9381 602
email: sales@safetyliftinggear.com

Unit R1D Rockingham Gate
Poplar Way West
Cabot Park
Bristol
BS11 0YW