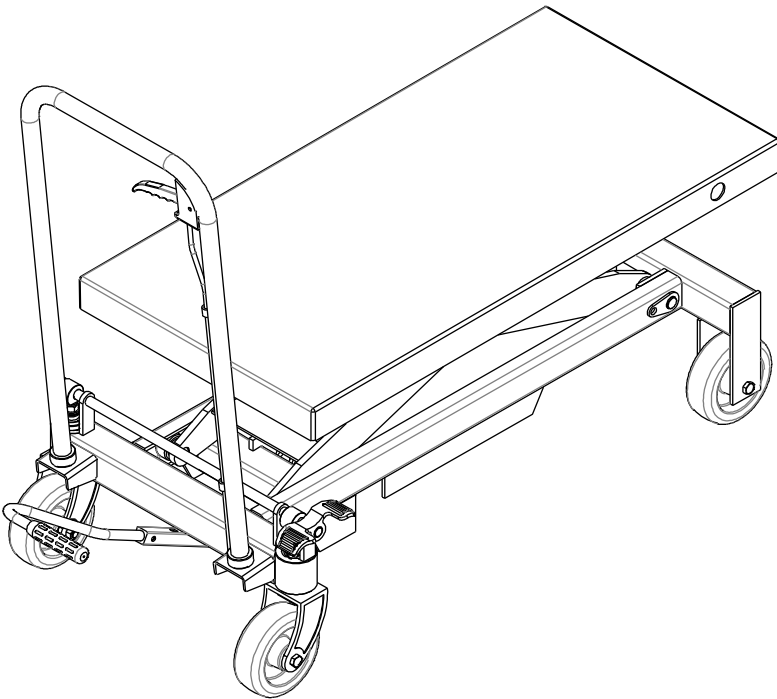


## PT800A/PT1000A Hydraulic Lift Table

- Operation manual
- Spare parts catalogue



## I . Main technical parameters :

		PT800A	PT1000A		
Capacity	kg	800	1000		
Max. lift height	mm	1000	1000		
Min. height of table	mm	415	415		
Table size	mm	1016X510	1016X510		
Handle height	mm	990	990		
Wheel diameter	mm	150	150		
Service weight	kg	114	114		

## II . Scope of application :

PT series table lift truck is a kind of high-lift transportation tool which is applicable for short-distance transportation as well as goods lifting and lowering. Besides, it can also be used as station facilities for workshop.

## III. Operation condition:

1. Lift table should be operated on solid and flat ground;
2. Operation temperature: -20-40C°.

## IV. Notes(warning) :

1. Read the instruction carefully before operation and get to know the performance and operation requirements of the lift table. And the hydraulic lift table can't be used unless it is authorized.
2. Do not overload the hydraulic lift table and operate it within the rated load. Overloading will cause damage to the hydraulic lift table and human body.
3. It is forbidden for operators to stand or sit on the table to work.
4. Don't put the hands or feet under the lowering table.
5. Please brake the truck when loading goods to prevent it from moving.
6. Off-set loading is forbidden when loading goods, and the goods should be distributed uniformly on the whole table.
7. Loose or unstable goods are not permitted to be loaded.
8. Don't put goods on working table for a long time.
9. The truck can't be moved when goods are being lifted.
10. The truck can only be moved on flat and hard ground, it is forbidden to be used on sloping ground or rugged ground;
11. When putting goods on table which has been hoisted, the weight of goods should be within rated load, and the goods should be loaded lightly. (Safety valve only works in hoisting process, if the truck has been hoisted, and then put overweight goods on it, the safety valve can't work. In this way, the truck may be damaged.)
12. When loading and unloading goods on hoisted table, don't drag goods in cross direction, which

may cause serious off-set loading and make truck turn over.

13. When maintaining and repairing truck, stand bar should be used to support fork arm in order to prevent table from falling (there should be no goods on table), and guarantee the safety in maintenance and repairing.
14. Please operate strictly according to "notes (warning)", otherwise it will bring damage to truck and human body.

## **V. Operation methods :**

1. Please step on the foot lever for several times to raise the working table.
2. Please lift the handle knob upward slowly, and open the one-way valve to make the working table descend slowly.
3. Please make the brake open before moving the truck.

## **VI. Maintenance and upkeep:**

It is very important to conduct necessary maintenance and upkeep so as to prolong the service life and safety of the lift table. Please check the lift table before operation according to the following items:

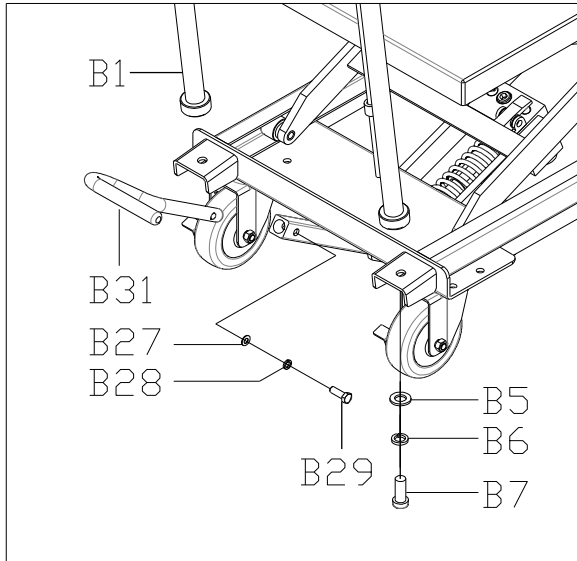
1. Whether there is any distortion and bending of various positions of the lift table.
2. Please check the brake of the truck and the wearing condition of the wheels.
3. Check oil leakage in the hydraulic system.
4. Please add or fill lubricant to each friction surface before daily operation.
5. If there is any failure, the lift table should be repaired at once, then it can be put into use again.
6. Change the hydraulic oil every twelve months, choose the following or close brand hydraulic oil according to the climate conditions of different areas:
  - a) YBN32 is adaptive under the environment temperature of -10~+40°C;
  - b) YCN32 is adaptive under the environment temperature of -20~+40°C.

## **VII. Assembly method :**

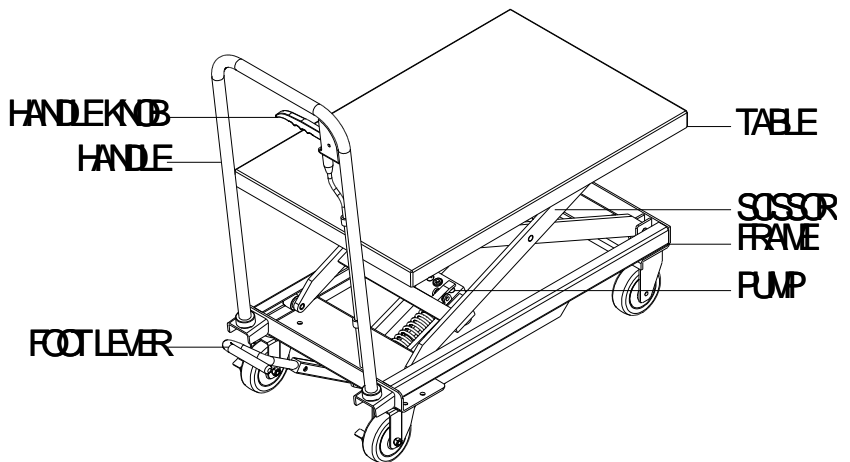
The handle and foot lever are dismantled when ex-factory, they might be fixed together by the users when using. The assembly methods are as follows:

Handle installation method: as shown following drawing, fix the handle (B1) to mounting hole of the truck body (A) with bolt (B7), spring washer (B6), flat washer (B5), then screw down the bolt (B7) with wrench.

Foot lever mounting: insert the foot lever (B31) into the hole, put in the screw (B29) and the plain washer (B27) , the spring washer (B28) ,then screw down the screw (B29) with wrench.

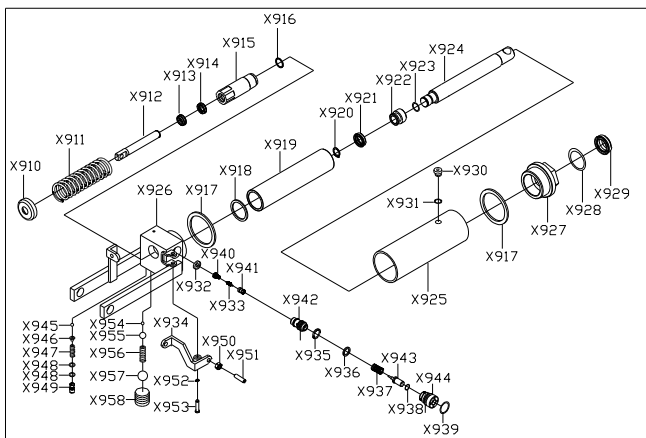


## VIII. Name of Parts

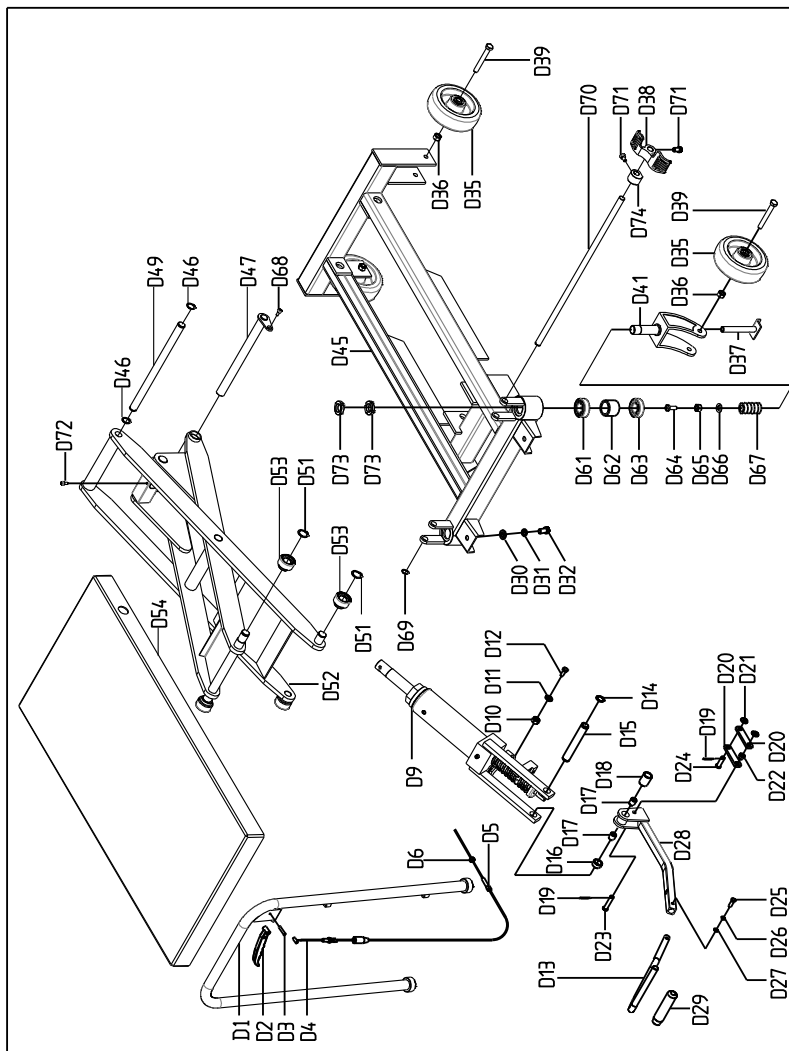


## IX. Spare parts catalogue

### 1. Pump Spare parts catalogue (Type PT800A/PT1000A)



No.	Name	Qty.	No.	Name	Qty.
X910	Cover for spring	1	X935	O-ring	1
X911	Spring	1	X936	Washer	1
X912	Pump core	1	X937	Spring	1
X913	Dust ring	1	X938	O-ring	1
X914	Seal ring	1	X939	O-ring	1
X915	Pump cylinder	1	X940	Spring	1
X916	Washer	1	X941	Valve	1
X917	Big Nylon washer	2	X942	Valve	1
X918	Small Nylon washer	1	X943	Strike pin	1
X919	Cylinder	1	X944	Strike pin base	1
X920	Retaining ring for axle	1	X945	Ball	1
X921	Seal ring	1	X946	Spring base	1
X922	Piston	1	X947	Spring	1
X923	O-Ring	1	X948	O-ring	1
X924	Piston rod	1	X949	Screw	1
X925	Housing	1	X950	Nut	1
X926	Base	1	X951	Bolt	1
X927	Cylinder cap	1	X952	Retaining ring for axle	1
X928	O-ring	1	X953	Pin	1
X929	Dust ring	1	X954	Ball	1
X930	Screw	1	X955	Ball	1
X931	O-ring	1	X956	Spring	1
X932	Valve cover	1	X957	Ball	1
X933	Valve	1	X958	Bolt	1
X934	Lever plate	1			



No.	Name	Qty.	No.	Name	Qty.
D1	Handle	1	D35	Wheel	4
D2	Handle knob	1	D36	Nut M12	4
D3	Spring pin	1	D37	Break pad	2
D4	Brake Line	1	D38	Break lever	2
D5	Screw	2	D39	Bolt	2
D6	Nut	2	D41	Base for universal wheel	2
D9	Pump	1	D45	Washer	8
D10	Nut	1	D46	Frame	1
D11	Washer	1	D47	Nut	2
D12	Clamp screw	1	D49	Retaining ring for axle	6
D13	Foot lever	1	D51	Nut	4
D14	Retaining ring for axle	2	D52	Spring washer	4
D15	Shaft	1	D53	Washer	4
D16	Short spacer bush	1	D54	Long shaft	2
D17	Bush	2	D61	Bearing	2
D18	Long spacer bush	1	D62	Spacer bush	2
D19	Cotter	2	D63	Bearing	2
D20	Link	2	D64	Screw m10X25	2
D21	Washer	2	D65	Nut M10	2
D22	Spacer bush	1	D66	Washer 10	2
D23	pin	1	D67	Spring	2
D24	Pin	1	D68	Screw M8X20	1
D25	Screw	1	D69	Retaining ring for axle 16	1
D26	Spring washer	1	D70	Brake rod	1
D27	Washer	1	D71	Screw M8X12	3
D28	Connecting rod	1	D72	Bolt M6X12	1
D29	Robber tube	1	D73	Nut M24X1.5	4
D30	Washer	2	D74	Cam	2
D31	Spring washer	2			
D32	Screw M12X25	2			

#### Contact Us

Tel: 0808 123 69 69  
Fax: 0117 9361 602  
Email: [sales@safetyliftinggear.com](mailto:sales@safetyliftinggear.com)

Unit R1D Rockingham Gate  
Poplar Way West  
Cabot Park  
Bristol  
BS11 0YW