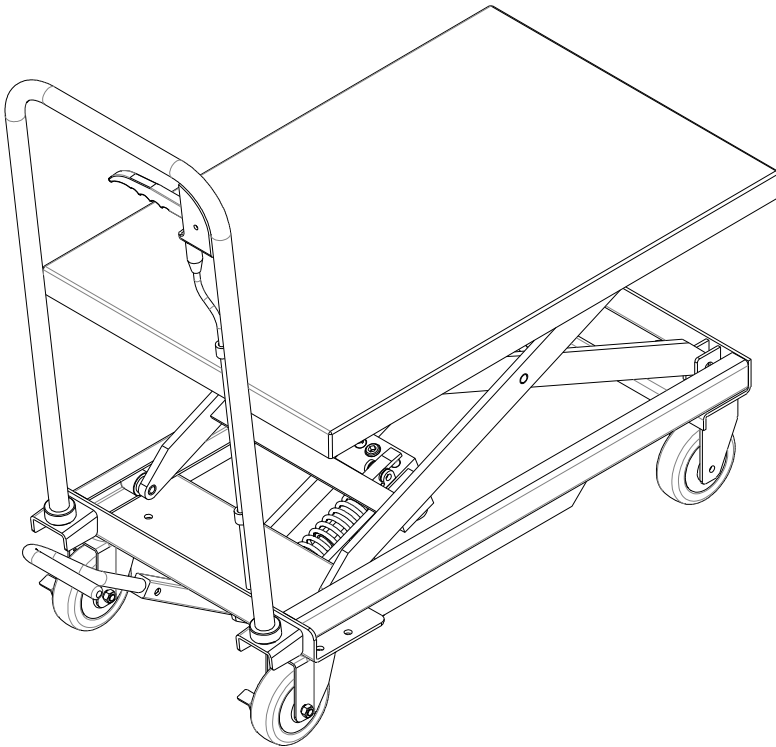




PT15 / PT30/PT50 Hydraulic Lift Table

- Operation manual
- Spare parts catalogue



I . Main technical parameters :

		PT15	PT30	PT50	
Capacity	kg	150	300	500	
Max. lift height	mm	725	900	900	
Min. height of table	mm	225	280	280	
Table size	mm	700X450	815X500	815X500	
Handle height	mm	815	970	970	
Wheel diameter	mm	100	125	125	
Service weight	kg	41	74	82	

II . Scope of application :

PT series table lift truck is a kind of high-lift transportation tool which is applicable for short-distance transportation as well as goods lifting and lowering. Besides, it can also be used as station facilities for workshop.

III. Operation condition:

1. Lift table should be operated on solid and flat ground;
2. Operation temperature: -20-40C°.

IV. Notes(warning) :

1. Read the instruction carefully before operation and get to know the performance and operation requirements of the lift table. And the hydraulic lift table can't be used unless it is authorized.
2. Do not overload the hydraulic lift table and operate it within the rated load. Overloading will cause damage to the hydraulic lift table and human body.
3. It is forbidden for operators to stand or sit on the table to work.
4. Don't put the hands or feet under the lowering table.
5. Please brake the truck when loading goods to prevent it from moving.
6. Off-set loading is forbidden when loading goods, and the goods should be distributed uniformly on the whole table.
7. Loose or unstable goods are not permitted to be loaded.
8. Don't put goods on working table for a long time.
9. The truck can't be moved when goods are being lifted.
10. The truck can only be moved on flat and hard ground, it is forbidden to be used on sloping ground or rugged ground;
11. When putting goods on table which has been hoisted, the weight of goods should be within rated load, and the goods should be loaded lightly. (Safety valve only works in hoisting process, if the truck has been hoisted, and then put overweight goods on it, the safety valve can't work. In this way, the truck may be damaged.)
12. When loading and unloading goods on hoisted table, don't drag goods in cross direction, which

may cause serious off-set loading and make truck turn over.

13. When maintaining and repairing truck, stand bar should be used to support fork arm in order to prevent table from falling (there should be no goods on table), and guarantee the safety in maintenance and repairing.
14. Please operate strictly according to "notes (warning)", otherwise it will bring damage to truck and human body.

V. Operation methods :

1. Please step on the foot lever for several times to raise the working table.
2. Please lift the handle knob upward slowly, and open the one-way valve to make the working table descend slowly.
3. Please make the brake open before moving the truck.

VI. Maintenance and upkeep:

It is very important to conduct necessary maintenance and upkeep so as to prolong the service life and safety of the lift table. Please check the lift table before operation according to the following items:

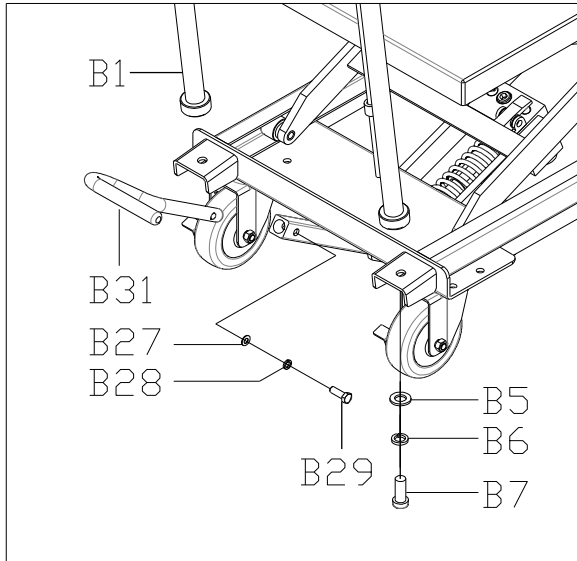
1. Whether there is any distortion and bending of various positions of the lift table.
2. Please check the brake of the truck and the wearing condition of the wheels.
3. Check oil leakage in the hydraulic system.
4. Please add or fill lubricant to each friction surface before daily operation.
5. If there is any failure, the lift table should be repaired at once, then it can be put into use again.
6. Change the hydraulic oil every twelve months, choose the following or close brand hydraulic oil according to the climate conditions of different areas:
 - a) YBN32 is adaptive under the environment temperature of -10~+40°C;
 - b) YCN32 is adaptive under the environment temperature of -20~+40°C.

VII. Assembly method :

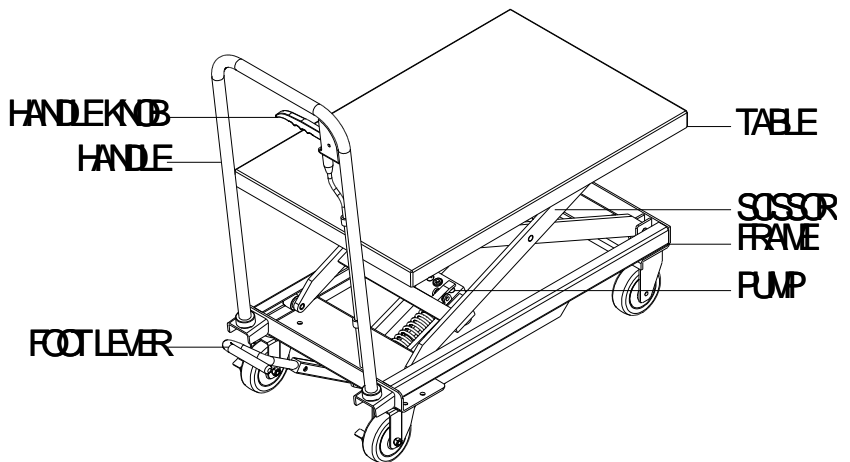
The handle and foot lever are dismantled when ex-factory, they might be fixed together by the users when using. The assembly methods are as follows:

Handle installation method: as shown following drawing, fix the handle (B1) to mounting hole of the truck body (A) with bolt (B7), spring washer (B6), flat washer (B5), then screw down the bolt (B7) with wrench.

Foot lever mounting: insert the foot lever (B31) into the hole, put in the screw (B29) and the plain washer (B27) , the spring washer (B28) ,then screw down the screw (B29) with wrench.

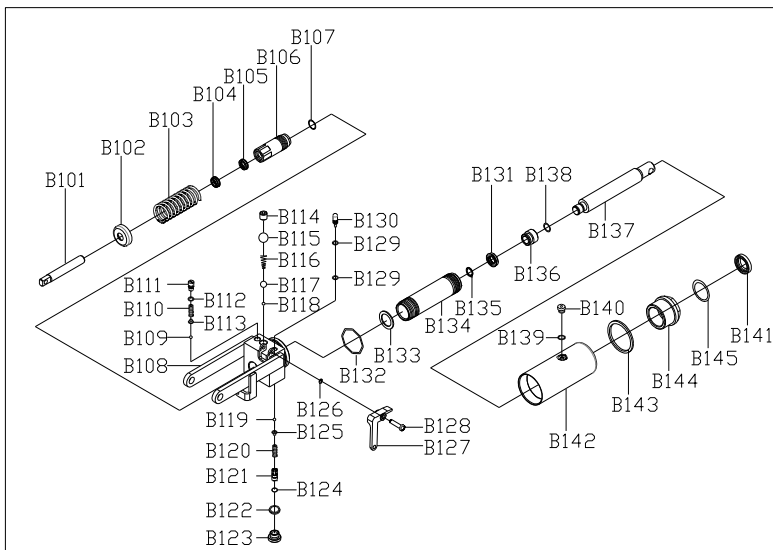


VIII. Name of Parts



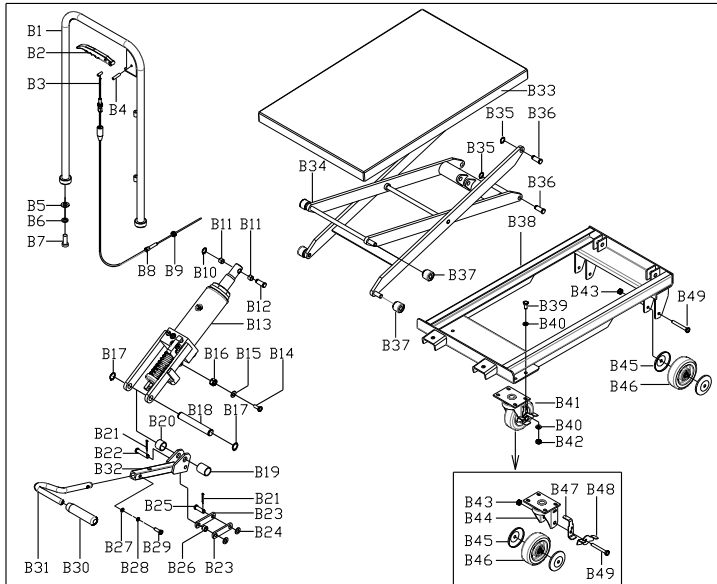
IX. Spare parts catalogue

1.Pump Spare parts catalogue (PT15)



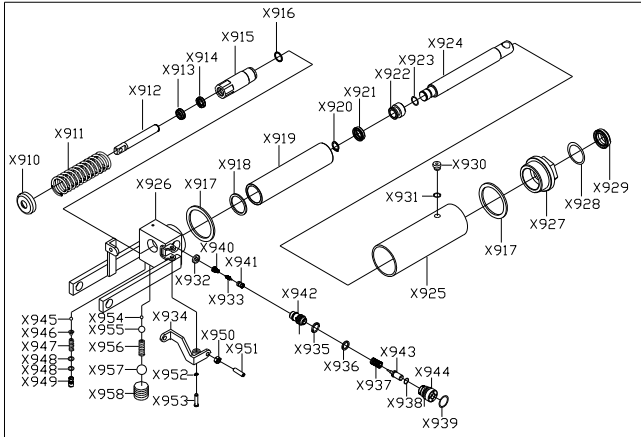
No.	Name	Qty.	No.	Name	Qty.
B101	Pump core	1	B125	Base for steel ball	1
B102	Cover for spring	1	B126	Retaining ring for axle	1
B103	Spring	1	B127	Lever plate	1
B104	Dust ring	1	B128	Pin	1
B105	Seal ring	1	B129	O-ring	2
B106	Pump cylinder	1	B130	Strike pin	1
B107	O-Ring	1	B131	Seal ring	1
B108	Pump base	1	B132	O-ring	1
B109	Steel ball	1	B133	Washer of Nylon	1
B110	Spring	1	B134	Cylinder	1
B111	Screw for adjust pressure	1	B135	Retaining ring for axle	1
B112	O-Ring	1	B136	Piston	1
B113	Base for steel ball	1	B137	Piston rod	1
B114	Screw	1	B138	O-ring	1
B115	Steel ball	1	B139	O-ring	1
B116	Spring	1	B140	Screw for sealing	1
B117	Steel ball	1	B141	Dust ring	1
B118	Steel ball	1	B142	Housing	1
B119	Steel ball	1	B143	Washer of Nylon	1
B120	Spring	1	B144	Cylinder cap	1
B121	Valve	1	B145	O-ring	1
B122	Compound gasket	1			
B123	Screw for sealing	1			
B124	O-ring	1			

2. Type PT15 Spare parts catalogue



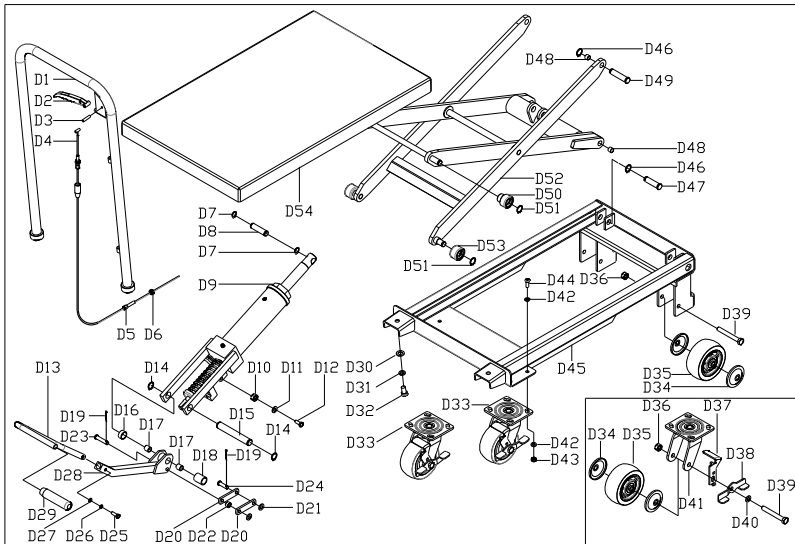
No.	Name	Qty.	No.	Name	Qty.
B1	Handle	1	B26	Spacer bush	1
B2	Handle knob	1	B27	Washer	1
B3	Brake Line	1	B28	Spring washer	1
B4	Spring pin	1	B29	Screw	1
B5	Washer	2	B30	Robber tube	1
B6	Spring Washer	2	B31	Foot lever	1
B7	Screw	2	B32	Connecting rod	1
B8	Screw	2	B33	Table	1
B9	Nut	2	B34	Scissor	1
B10	Retaining ring for axle	1	B35	Retaining ring for axle	4
B11	Bush	2	B36	Shaft	4
B12	Axle	1	B37	Pulley	4
B13	Pump	1	B38	Frame	1
B14	Clamp screw	1	B39	Screw	8
B15	Washer	1	B40	Washer	16
B16	Nut	1	B41	Universal wheel	2
B17	Retaining ring for axle	2	B42	Nut	8
B18	Shaft	1	B43	Nut	4
B19	Long spacer bush	1	B44	Base for universal wheel	2
B20	Short spacer bush	1	B45	Dust cover	4
B21	Cotter	2	B46	Wheel	4
B22	Pin	1	B47	Break pad	2
B23	Link	2	B48	Break lever	2
B24	Washer	2	B49	Screw	4
B25	Pin	1			

3.Pump Spare parts catalogue (Type PT30/PT50)



No.	Name	Qty.	No.	Name	Qty.
X910	Cover for spring	1	X935	O-ring	1
X911	Spring	1	X936	Washer	1
X912	Pump core	1	X937	Spring	1
X913	Dust ring	1	X938	O-ring	1
X914	Seal ring	1	X939	O-ring	1
X915	Pump cylinder	1	X940	Spring	1
X916	Washer	1	X941	Valve	1
X917	Big Nylon washer	2	X942	Valve	1
X918	Small Nylon washer	1	X943	Strike pin	1
X919	Cylinder	1	X944	Strike pin base	1
X920	Retaining ring for axle	1	X945	Ball	1
X921	Seal ring	1	X946	Spring base	1
X922	Piston	1	X947	Spring	1
X923	O-Ring	1	X948	O-ring	1
X924	Piston rod	1	X949	Screw	1
X925	Housing	1	X950	Nut	1
X926	Base	1	X951	Bolt	1
X927	Cylinder cap	1	X952	Retaining ring for axle	1
X928	O-ring	1	X953	Pin	1
X929	Dust ring	1	X954	Ball	1
X930	Screw	1	X955	Ball	1
X931	O-ring	1	X956	Spring	1
X932	Valve cover	1	X957	Ball	1
X933	Valve	1	X958	Bolt	1
X934	Lever plate	1			

4.Type PT30/PT50 Spare parts catalogue



No.	Name	Qty.	No.	Name	Qty.
D1	Handle	1	D28	Connecting rod	1
D2	Handle knob	1	D29	Robber tube	1
D3	Spring pin	1	D30	Washer	2
D4	Brake Line	1	D31	Spring washer	2
D5	Screw	2	D32	Screw	2
D6	Nut	2	D33	Universal wheel	2
D7	Retaining ring for axle	2	D34	Dust cover	8
D8	Axle	1	D35	Wheel	4
D9	Pump	1	D36	Nut	4
D10	Nut	1	D37	Break pad	2
D11	Washer	1	D38	Break lever	2
D12	Clamp screw	1	D39	Bolt	4
D13	Foot lever	1	D40	Washer	2
D14	Retaining ring for axle	2	D41	Base for universal wheel	2
D15	Shaft	1	D42	Washer	16
D16	Short spacer bush	1	D43	Nut	8
D17	Bush	2	D44	Screw	8
D18	Long spacer bush	1	D45	Frame	1
D19	Cotter	2	D46	Retaining ring for axle	4
D20	Link	2	D47	Shaft	2
D21	Washer	2	D48	Bush	4
D22	Spacer bush	1	D49	Shaft	2
D23	pin	1	D50	Pulley	2
D24	Pin	1	D51	Retaining ring for axle	4
D25	Screw	1	D52	Scissor	1
D26	Spring washer	1	D53	Pulley	2
D27	Washer	1	D54	Table	1

Contact Us**Tel:** 0808 123 69 69**Fax:** 0117 9361 602**Email:** sales@safetyliftinggear.com

Unit R1D Rockingham Gate
Poplar Way West
Cabot Park
Bristol
BS11 0YW